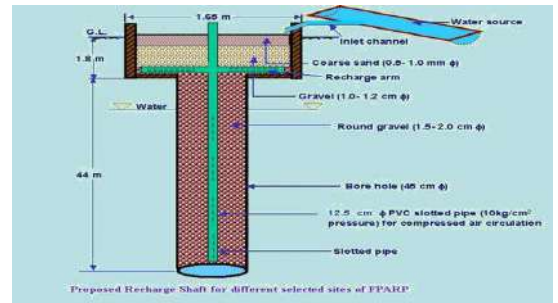
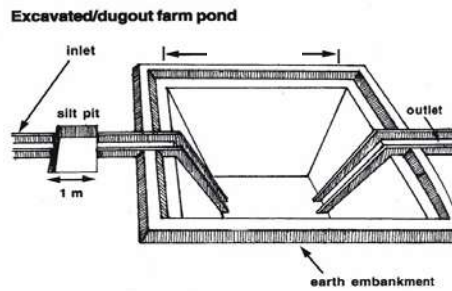




CENTRAL GROUND WATER BOARD
MINISTRY OF WATER RESOURCES,
RIVER DEVELOPMENT & GANGA REJUVANATION
GOVERNMENT OF INDIA



ARTIFICIAL RECHARGE TO GROUND WATER AND WATER CONSERVATION PLAN OF
CHIRAWA BLOCK,
DISTRICT JHUNJHUNU, RAJASTHAN

Western Region, Jaipur
January, 2016

**ARTIFICIAL RECHARGE TO GROUND WATER AND WATER CONSERVATION
PLAN BLOCK CHIRAWA,
DISTRICT JHUNJHUNU**

Plan at a Glance

1.	Area of the Chirawa Block	493.04Sq.Km.
2.	Area identified for Artificial Recharge	493.04Sq.Km
3.	Dynamic Ground Water Resources (as on 31.03.2011)	
	Net Ground Water Availability	20.84 MCM
	Annual Ground Water Draft	64.03 MCM
	Stage of Ground Water Development	307.26 %
4.	Runoff available in the block	0.4359 MCM
	Volume of water recharged	0.4359 MCM
5.	Volume of unsaturated aquifer zone available for recharge	2563.808 MCM
6.	Total number of structures to be proposed	
	Recharge structures	Numbers
	Existing village pond with recharge shaft/ well	15 shafts in 15 Nos. of existing village ponds
	Percolation tank	0
	Expected Annual GW recharge	0.305 MCM
7.	Estimated Cost	0.882 crore
	Artificial Recharge Plan	0.75 crore
	Piezometer construction	0.09 crore
	Operation and maintenance	0.042 crore

ARTIFICIAL RECHARGE TO GROUND WATER AND WATER CONSERVATION PLAN BLOCK CHIRAWA, DISTRICT JHUNJHUNU

1 INTRODUCTION

The demand of fresh water for agriculture, drinking and industrial uses etc. has significantly increased due to population growth and socio-economic development. As surface water resources in the State of Rajasthan are meagre, the dependability on ground water resources in the State has increased substantially. This has resulted in over exploitation of ground water resources vis a vis depletion of ground water levels in various parts of the State.

The **Chirawa Block, district Jhunjhunu** is one of the over exploited blocks of Rajasthan and is under severe stress, as evident from the stage of ground water development, which has attained an alarming level of **307.26%**. In view of over exploitation of ground water resources in the block, ground water resources in the area are under continuous depletion. Thus there is urgent need for taking up suitable water management interventions based on integrated approach, which on one hand includes augmentation of ground water resources through appropriate techniques, and on the other hand requires the adoption of suitable water conservation measures, such as ensuring water use efficiency through creation of additional water storage facility, maintenance/ renovation of existing water bodies etc. Water awareness and capacity building of the stakeholders are also the important attributes of water management interventions as envisaged in the National Water Policy.

Artificial recharge to ground water is one of the most efficient, scientifically proven and cost effective technology to mitigate the problems of over exploitation of ground water resources. The technology serves as a means for restoring the depleted ground water storage, ameliorate the ground water quality problems and also enhance the sustainability of wells in the affected areas. A detailed knowledge of geology, hydrogeology, land use pattern, geomorphology and hydro-meteorological features are however, essential for selection of appropriate artificial recharge techniques as well as design and sites of ground water recharge structures.

As per directions of Ministry of Water Resources, River Development and Ganga Rejuvenation, Government of India and in pursuance to letter no 16-24/M(SML)/CGWB/ARP- OE Blocks/2015-6957, dated 13.7.2015 & 3.8.2015 & letter no 39(43)/TC/CHN/CGWB/2015-7929, dated 4.9.2015 from Central Headquarters, Central Ground Water Board, **the preparation of Artificial Recharge and Rainwater harvesting Plan for Over exploited blocks in the State of Rajasthan has been taken up** on priority by the Western Region, Central Ground Water Board, Jaipur. Each Plan discusses the broad framework of ground water situation in the block, status of water availability (both surface and ground water), identification of feasible areas for interventions, feasibility of Artificial recharge and other water conservation structures, their design considerations, numbers and cost estimates. The expected outcomes of the proposed interventions have also been elucidated in the report

The GIS layers used in the Plan include administrative (upto village level), Hydrogeology, Depth to Water level (pre and post monsoon), geomorphic, drainage, water bodies and the map of tentative locations of proposed interventions.

Methodology:

The methodology as adopted for the assessment of source water availability is as follows:

As per Ground Water Department, Government of Rajasthan direction the basin wise availability of surplus run off is calculated after taking into account 75 % dependability on the rain water for all uses. In furtherance, the sub basins with surplus run off available for recharge were taken into consideration.

The block area falling in particular sub basin was taken into account and a proportionate area of the sub-basin draining the block was calculated. Based on this area of sub-basin draining the block, proportionate surplus run off, in the block by the sub basin, for recharge was calculated.

Thus was calculated the final amount of surplus run off available for recharge in particular block by one particular sub-basin. The available run off was considered for Recharge through Recharge Shaft (@ 0.03 MCM) and Percolation tank (@ 0.2 MCM). If after allocating water for Recharge through Recharge Shaft, large amount of surface run off was left then the Water conservation through Farm Ponds, along with recharge through Percolation Tanks, was also taken into account.

Besides the available run off the Average Water Level for the time span of ten years (Nov., 2005 to Nov. 2014) and the Decadal Water Level trend (Nov., 2005 to Nov. 2014) were also taken into account. The blocks showing average water level more than 10 m bgl and declining water level trend were considered suitable for Artificial Recharge Plan.

1.1 Location of the block

The Chirawa Block covering an area of 493.04 Sq. Km. falls in central part of Jhunjhunu District and is located between North latitudes 28°00' & 28°22' and East longitudes 75°23' & 75°40'. As per 2011 census, the total rural population of the Block is 171997 persons consisting of 87290 males & 84707 females. Location map is shown in **Fig 1**

1.2 Source wise Irrigated Area

More than 50% area of this block is irrigated through different sources. The dug wells/ Tubewells are the only major source of irrigation in Chirawa Block. There is no area that falls under canal & pond irrigation.

Fig 1

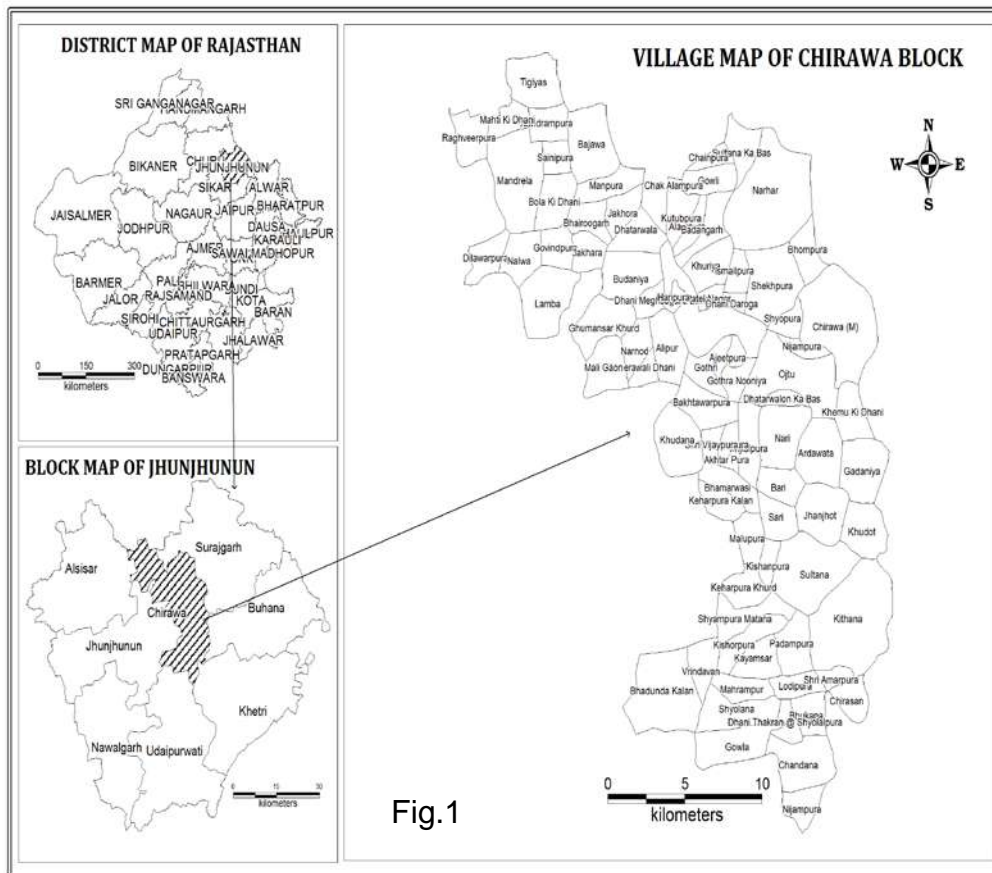
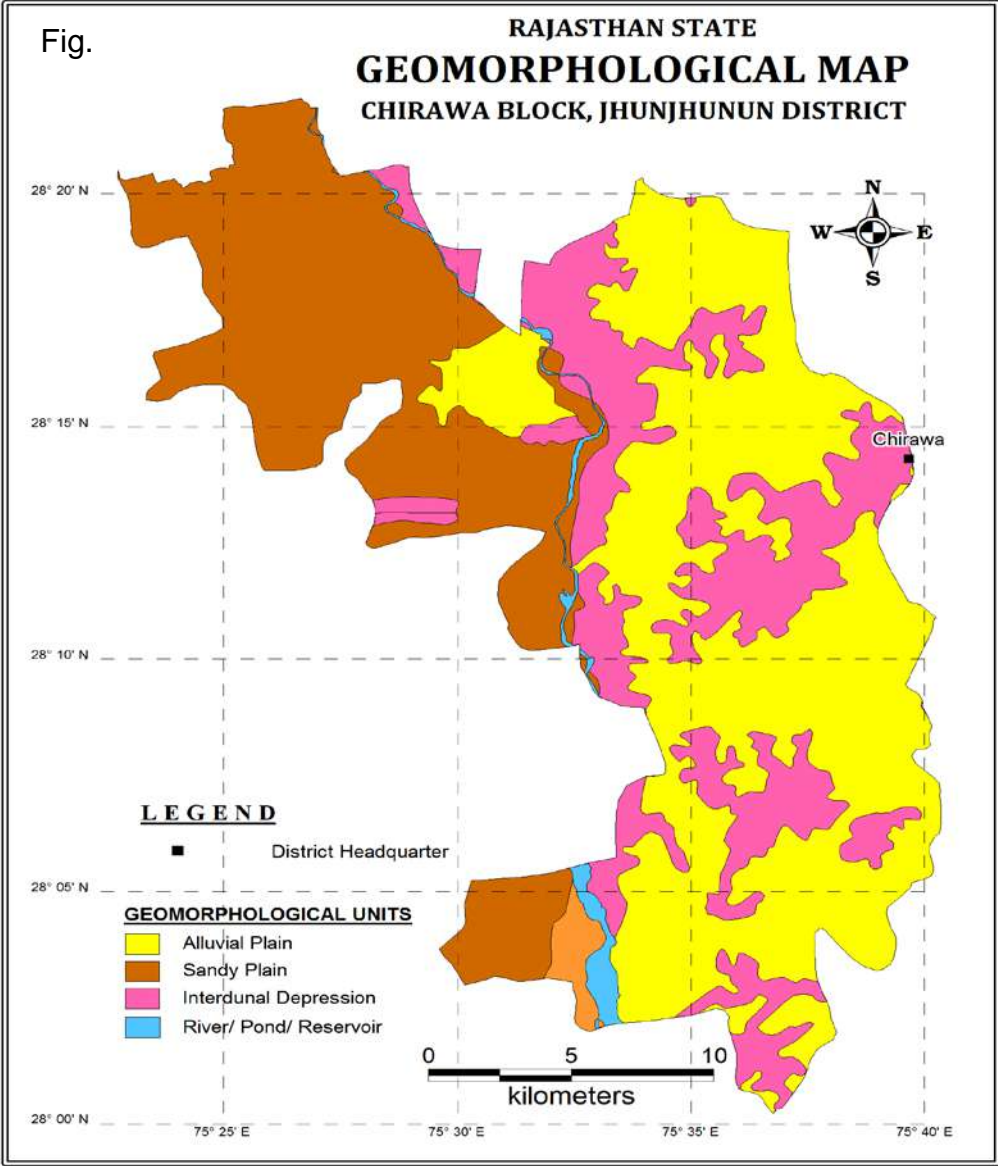


Fig.1

1.3 Physiography & Drainage

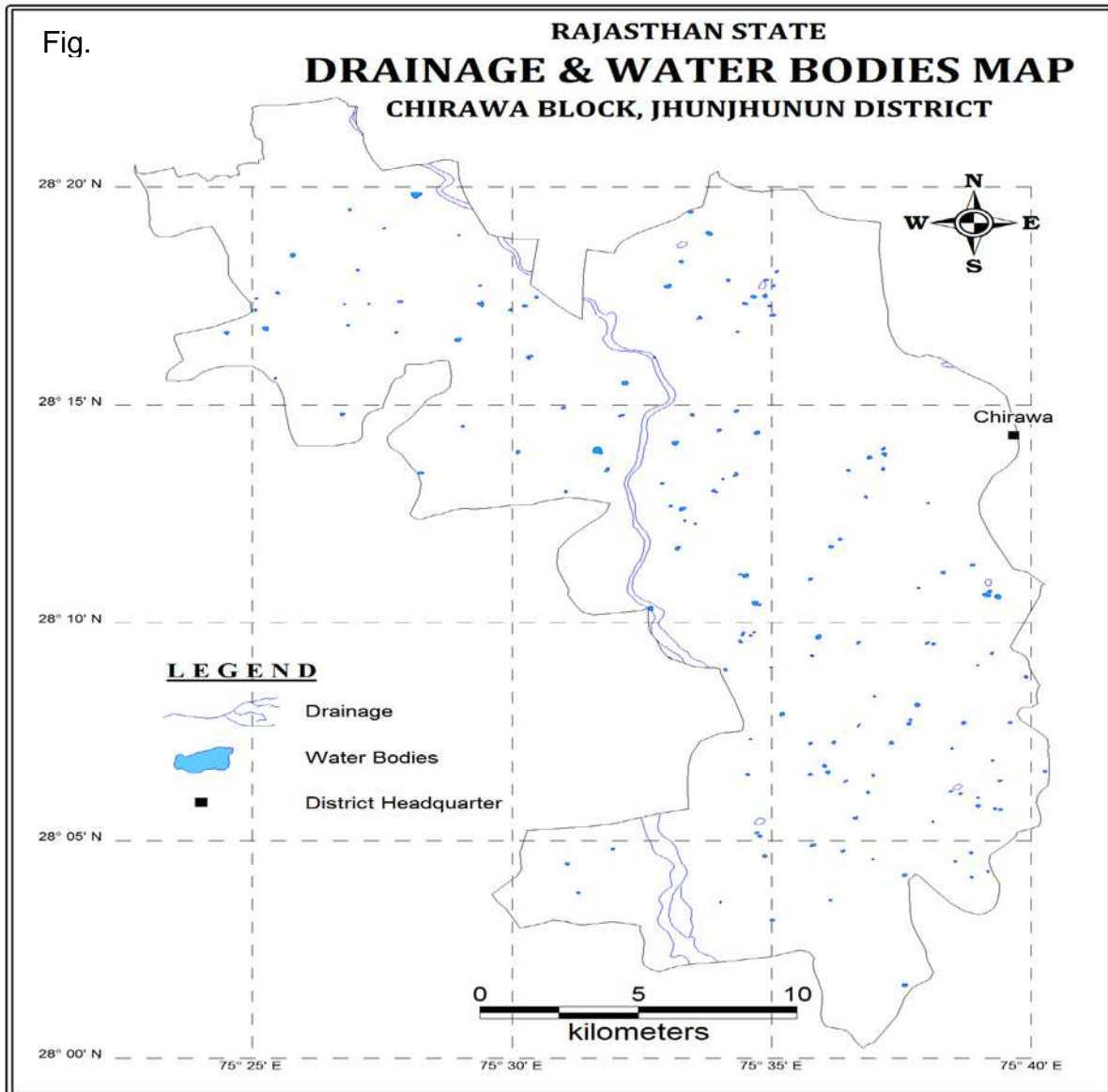
Physiographically (Fig 2), the block is characterized by presence of alluvial plains. The minimum and maximum elevation of Block is 282.7 m. amsl and 411.0 m. amsl, respectively.

Fig 2



There is no perennial river flowing in this Block. It is drained by ephemeral Kantli in north western part. The western half of block falls under Shekhawati (Mendha) basin. The map showing drainage and water bodies in the Chirawa block is shown in **Fig. 3**.

Fig.3



1.4 Rainfall

The climate of the block is semi arid. The Normal annual rainfall of block is 425.84mm. Failure of rains has observed several times. The available data of rainfall indicates that larger part of annual rainfall is received through SW monsoon during July to September. In March, there is transition to summers. The summer months of April to June are the

hottest months and temperature upto 48°C is reached. From end of June to September, south western monsoon is received. The months of July and August are the wettest months, receiving about 70% of total annual rainfall. Winter season starts from November and lasts upto February. Average temperature during these months remains between 15° to 18°C, however from end of December to mid January, temperature remains in the range of 5° to 10°C.

1.5 Hydrogeology of the Area

Quaternary alluvium is the principal water bearing formation. Alluvium (composed of sand, silt, clay, kankar and gravel) forms the principal and potential aquifer in the area. The entire area of 493.04 sq. km. forms potential zone. Ground water occurs under unconfined to semi-confined conditions in the primary porosity i.e. pore spaces. In general yield of wells tapping alluvial aquifers varies from 2.92 to 15 lps depending on the thickness of saturated granular zones. The map showing aquifer system in the Chirawa block is shown in **Fig. 4**

The average decadal depth to water level is 60.59 mbgl for Pre monsoon & 59.42 mbgl for Post monsoon. As per Average depth to water level (from November, 2005 to November, 2014), the block shows deep water level ranges with area showing water level ranges between 20- 50, 50-60 and 60-70. (**Fig 5**)

According to depth to water level maps of May 2014 & November 2014, water level is more than 40 mbgl in the entire block. (**Fig 6 and 7**).

Water Level Trend:

At these monitoring stations, water level fall varying from 1.60 to 1.89 m/year during pre monsoon and 1.44 to 2.01 m/year during post monsoon has been observed.

As per the Decadal Water level trend (from November, 2005 to November, 2014), the declining trend is visible in the block. The fall in the range of 1-2 m in ground water level is prevalent in the block. The map of Decadal Water Level Trend is shown in **fig. 8**.

Fig: 4

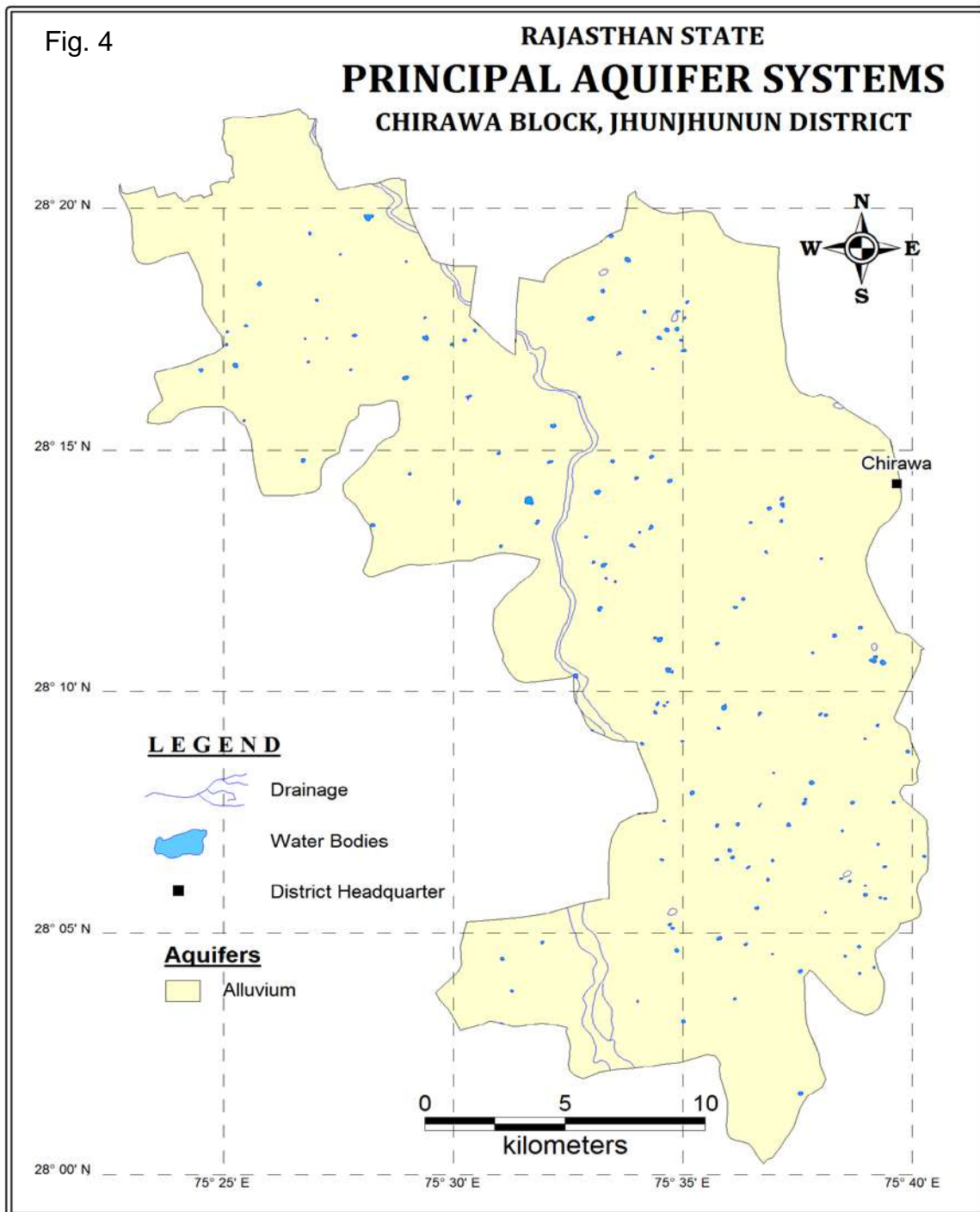


Fig: 5

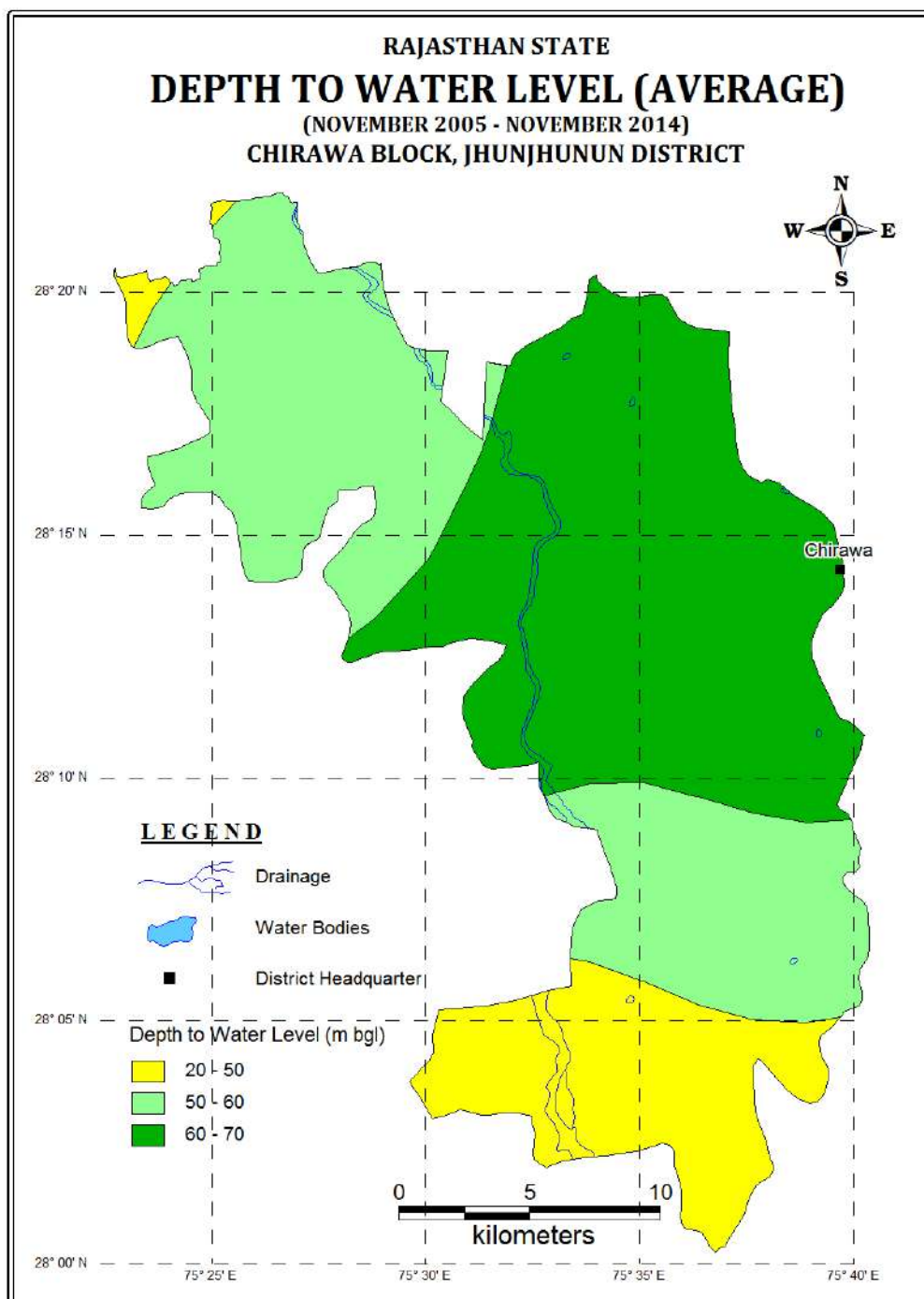


Fig: 6

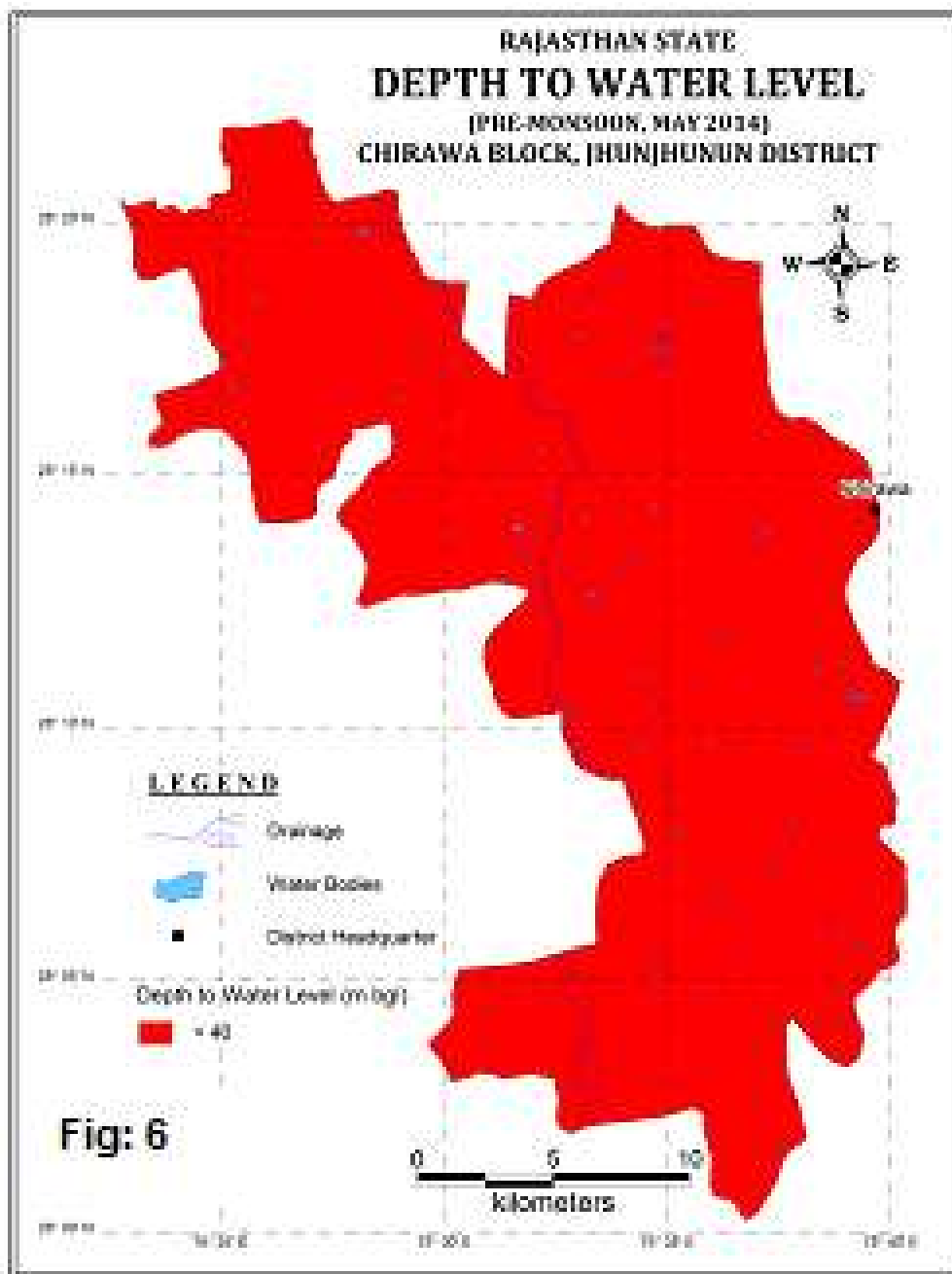


Fig: 7

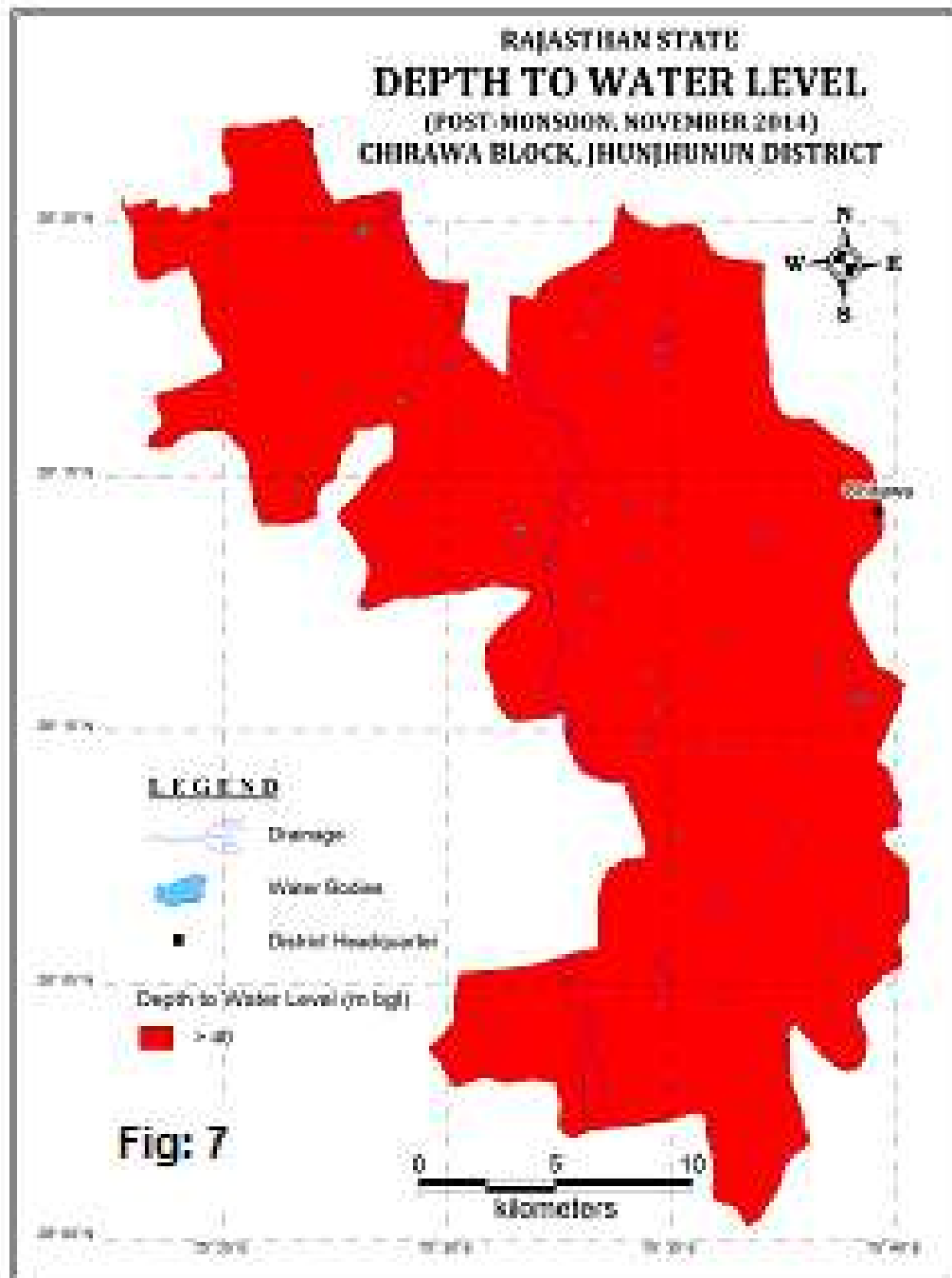
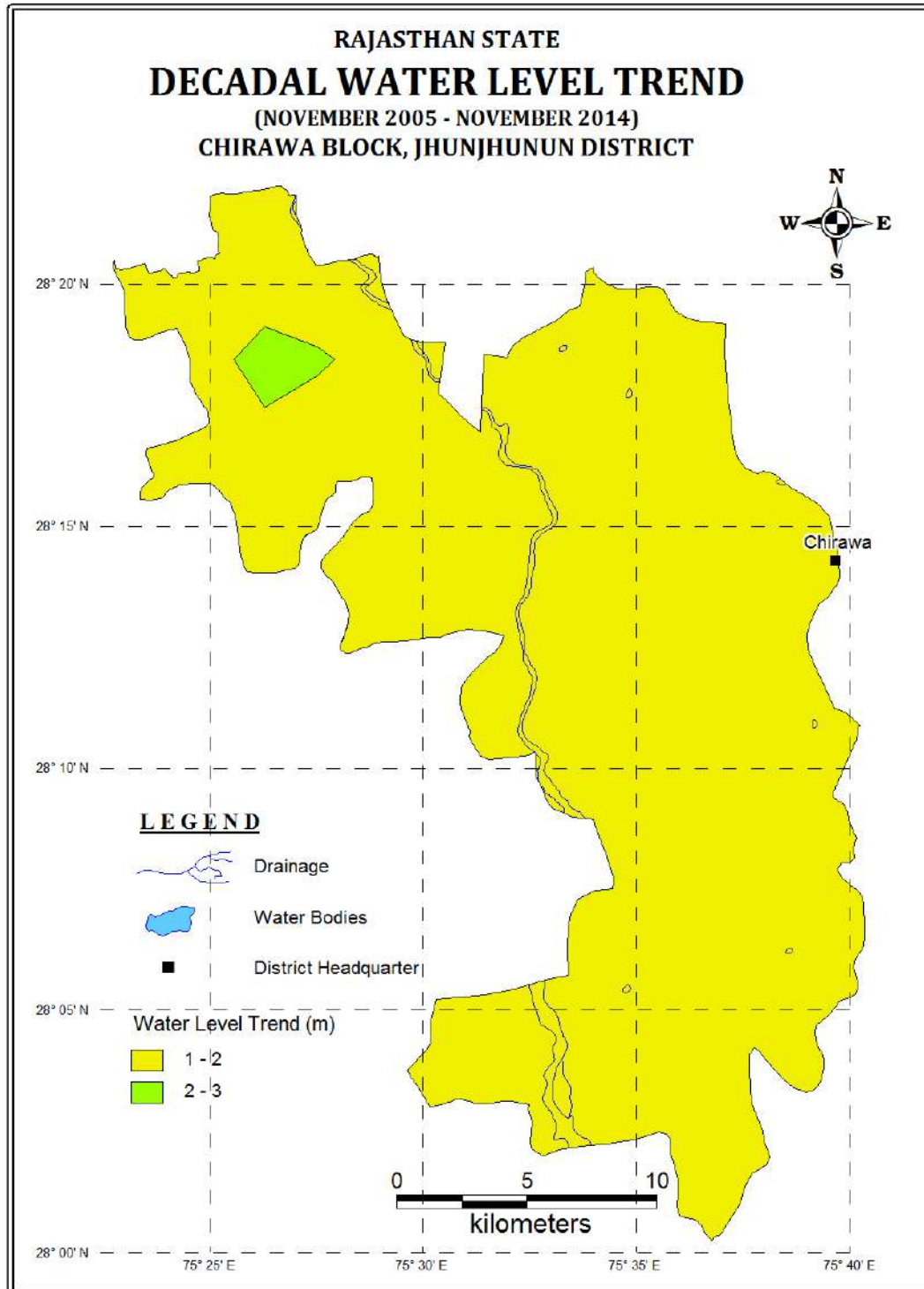


Fig: 8



1.6 Subsurface Hydrogeology

As inferred from borehole data of the Chirawa Block; Alluvium forms the principal aquifer in this area. Exploratory bore hole data has revealed the presence of aquifer system down to the depth of 100 m in general. The depth of drilling ranges from 34.75 to 129.83 mbgl and the average discharge ranges from 1.67 to 37.58 lps. The quality of water has 2 major problems, i.e., Salinity & Fluoride. Transmissivity value varies between 122 to 156 m²/day and Storativity value is 0.0011.

1.7 Dynamic Ground Water Resource

The Ground water Resources for the block are given in Table 1. as per Dynamic Ground Water Resource Assessment (as on 31.03.2011). The Net Ground water Availability of Block is 2083.81 ham and Annual Ground water draft is 6402.63 ham. Due to this excessive draft over recharge, stage of Ground water development has reached 307.26%.

Table 1. Ground Water Availability, Utilization and Stage of Development Chirawa Block, Jhunjhunu District

Natural Discharge During Non Monsoon Period	231.54 ham
Net Ground Water Availability	2083.81 ham
Annual Ground Water Draft	6402.63 ham
Net Ground water Availability for Future Irrigation Use	0 ham
Stage of Ground Water Development	307.26%
<i>Source: Ground Water Resource Assessment 31.03.2011</i>	

Need for artificial recharge and water conservation plan

The present artificial recharge and water conservation Plan aims to mitigate the problems of continuous decline in water levels over the area through techniques of artificial recharge utilizing surplus rainwater based on scientific manner for optimal results. The broad scope of the recharge plan is as follows:

- ❑ Establishing efficacy of integrated approach through various artificial recharge and water conservation techniques. Intervention is proposed in cluster mode basis wherever feasible to have a better impact.
- ❑ Enhancing water use efficiency for controlling excessive ground water draft, especially for irrigation purposes.
- ❑ Ensuring sustainability of ground water abstraction structures and improvement in quality of ground water.

Surface water availability

As per the studies carried out by Water Resources Department, Govt of Rajasthan there is hardly any surplus water available for further development at 75% dependability. However, after taking into account the availability of source water in the basins of Rivers flowing in the State proportionate amount of surplus runoff available in particular block by particular sub basin was calculated.

Accordingly about 0.4359 MCM has been considered for recharge plan in the block. Optimum utilization of rainwater runoff depends on availability of land, feasible conditions, etc. Surface water availability, allocation and number of structures are presented in table 2.

Table 3: Source water for artificial recharge and number of recharge structure

District	District code	Block	Block code	Area of Block (Sq.km.)	Potential area suitable for recharge (Sq.km.)	Type of Aquifer	Area feasible for artificial recharge (Sq km)	Sp Yield
JHUNJH UNUN	RJ21	CHIRAWA	RJ2103	493.04	493.04	alluvium	493.04	0.100

Table 3 (contd): Source water for artificial recharge and number of recharge structure

Average DTW (mbgl) NOV 2013	Thickness of unsaturated zone 3 m below ground level (m)	Volume of sub surface storage space available for artificial recharge (MCM)	Sub Basin	Surplus available in the block (in Mm3)	Surplus water used in Recharge Shaft (RS)	No. of RS 0.03 MCM/RS	Remaining Surplus water for Percolation tank (PT)	No. of PT (0.2 MCM/PT)
55	52	2563.808	Kantli	0.4359	0.4359	15	0	0

Feasible Artificial Recharge and water conservation structures

A wide spectrum of techniques are in vogue, which are being implemented to recharge the ground water reservoir, conserve the utilizable rainfall and enhance the water use efficiency. Based on prevailing field conditions, out of total block area of 493.04 sq km practically whole block i.e. 493.04 sq km area is feasible for implementing recharge measures. Based on available information about the area such as ground water scenario, hydrogeology, hydrology, topography, rainfall pattern, drainage, soil cover, utilizable rainfall etc. scope for various interventions has been studied and assessment of suitable areas, tentative design and costs of structures has been worked out in the present plan.

Identification of feasible areas

Chirawa block is having ground water level more than 40m below ground level and as per dynamic ground water resource estimation, the block is over exploited with stage of ground water development at 307.26 %. The Chirawa block is feasible for recharge due to presence of permeable zone above water table, favorable land slope and availability of water from rainfall.

Generally the Artificial recharge structures suitable in this type of area are Check dams/ Anicuts/ Percolation tanks and Recharge Shafts/ Recharge wells. Since the ground water levels are quite deep in the block, the structures like ani-cuts and Check dams are not suitable and also their construction is regulated. Considering these aspect the proposal for Recharge Shaft/ Recharge wells and percolation tanks have been firmed up in the present Plan are the most suitable structures in Chirawa block.

Details of Ground Water Recharge Measures

1. Existing Village Pond with recharge shaft/wells

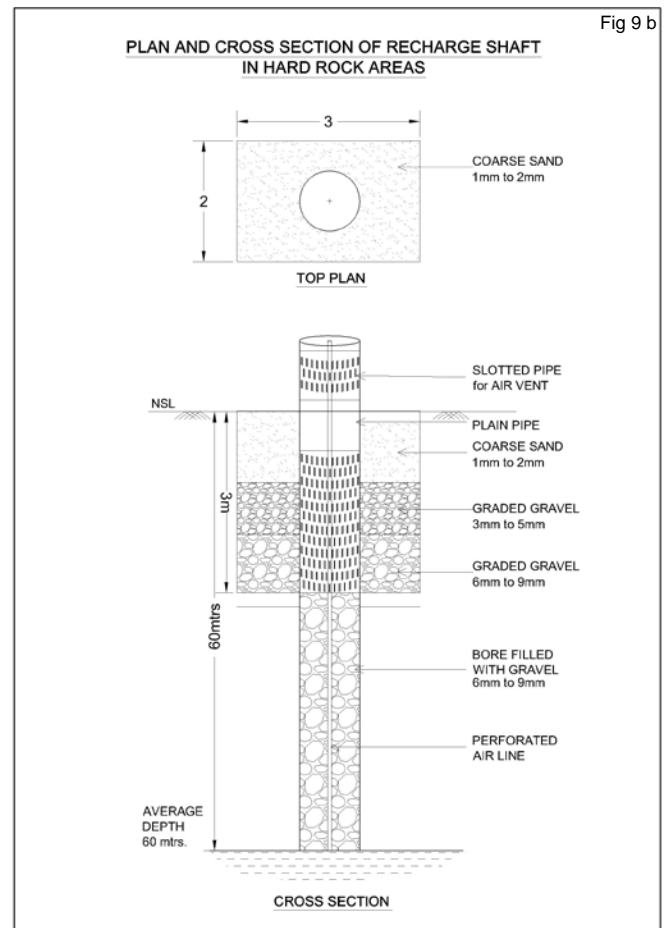
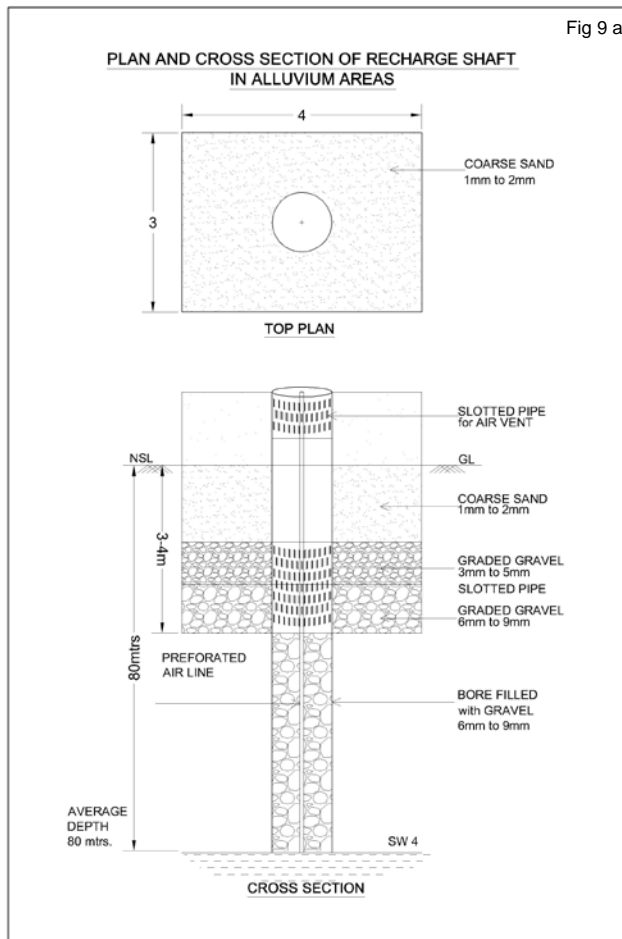
Almost all the villages in the State of Rajasthan have one or two village ponds & other ponds. With time, these ponds get silted & hardly any water percolates downward. Also, any excess water coming into the pond goes away as a run off due to limited storage capacity. This surplus runoff can very well be utilized for recharging the ground water and also for enhancing conservation of water that can be further used for irrigation, thereby saving ground water withdrawal. Since natural recharge from these ponds is limited due to siltation and ground water levels are deep, the most effective ground water structure considered under the Plan is Recharge Shaft/ Recharge well constructed within the pond itself.

The above mentioned recharge well has been designed in a manner that maximum surplus water would likely to be utilized for recharge as well as sufficient water is retained in the pond for local use.

The model design of recharge well has been worked out in consultation with Ground Water Department, Government of Rajasthan and presented in Fig 9a & 9b. The major features required are:

1. The well should have sufficient diameter for recharge- 10 to 12 inch diameter well with bottom screen/ opening just above the highest ground water level.
2. The well should have screen/ opening at the top, which should be at least 1.5m above the bed level of the pond.
3. The upper opening should be surrounded with filter pack comprising graded filter media of medium, coarse sand & gravel, so that the Recharge well does not get silted.

The opening for inflow to the well has been proposed at 1.5m above Bed level of pond. This is necessary to ensure that the pond retains sufficient water for use by local consumers. However, this may necessitate further deepening of pond itself so that the pond is 3-4 m deep. A Single well as discussed above would be suitable for a pond upto area of about 5ha. Therefore, more number of such Recharge wells is envisaged for larger ponds.

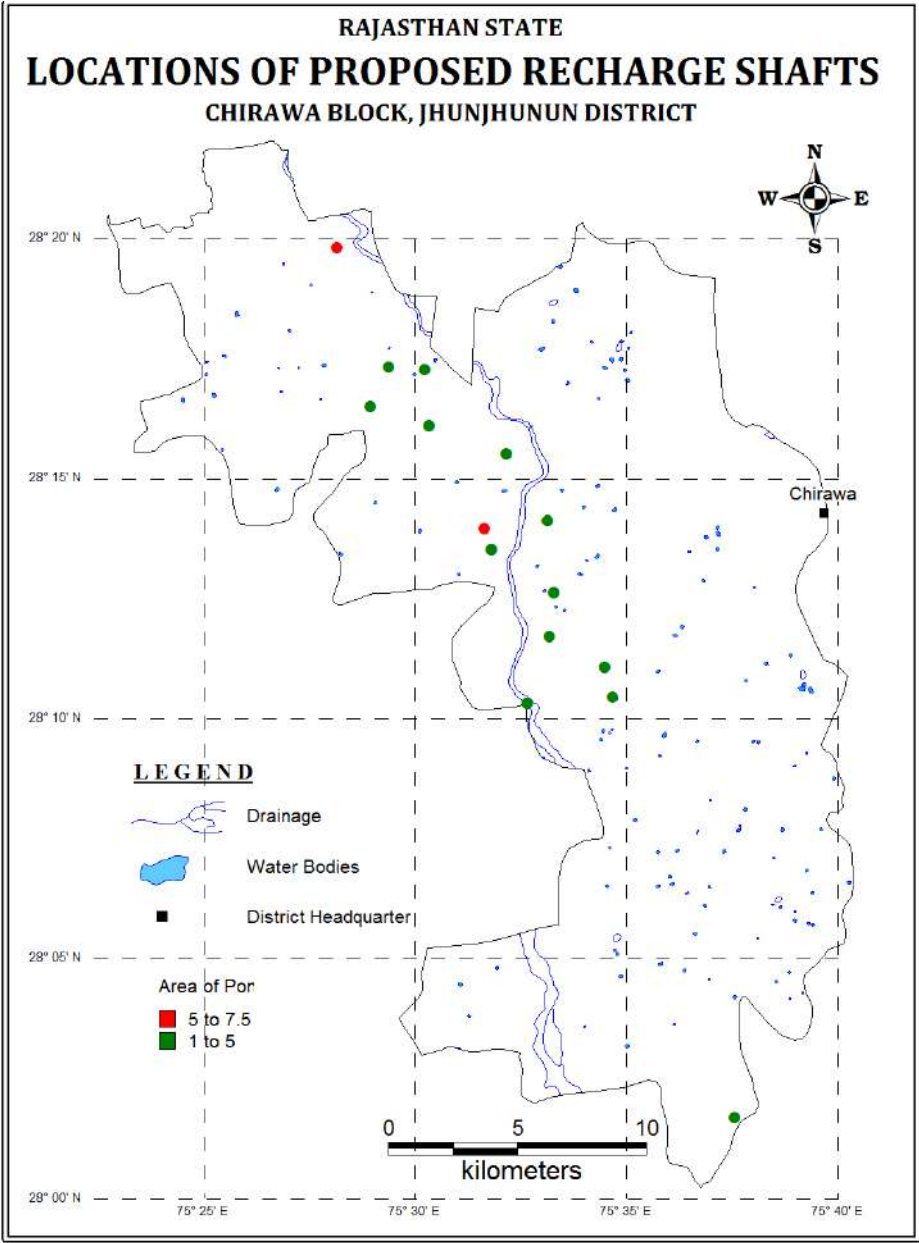


The tentative location of villages for construction of recharge shaft/well in existing village pond and their cost estimates are shown in Fig 10 and Table 3. The plan proposes construction of 15 recharges shafts/ wells in 15 identified existing village ponds at an estimated cost of 0.75 cr.

Table 3: Tentative locations of village for village pond with recharge shaft

S.N	Village	Long	Lat	Pond Area (Ha)	No of Shaft	Formation	Unit cost (Rs in lac)	Cost of Shaft (Rs in lac)
1	Dhatarwala	75.50	28.29	1.4553	1	Soft	5	5
2	Alipur	75.53	28.23	1.6336	1	Soft	5	5
3	Chandana	75.63	28.03	1.9433	1	Soft	5	5
4	Budaniya	75.51	28.27	1.9662	1	Soft	5	5
5	Bakhtawarpur a	75.55	28.20	2.0759	1	Soft	5	5
6	Gothri	75.55	28.21	2.2975	1	Soft	5	5
7	Brijlalpura	75.58	28.17	2.3098	1	Soft	5	5
8	Dhatarwala	75.48	28.27	2.3830	1	Soft	5	5
9	Brijlalpura	75.57	28.18	2.4758	1	Soft	5	5
10	Gothra Lamba	75.54	28.26	2.4895	1	Soft	5	5
11	Bhamarwasi	75.54	28.17	2.5839	1	Soft	5	5
12	Gothra Lamba	75.55	28.24	2.7010	1	Soft	5	5
13	Jakhora	75.49	28.29	2.8894	1	Soft	5	5
14	Bajawa	75.47	28.33	5.4405	1	Soft	5	5
15	Alipur	75.53	28.23	6.8858	1	Soft	5	5

Fig 10



B. Revival, repair of water bodies

The existing ponds and tanks in loose their storage capacity as well as the natural ground water recharge through these water bodies has also become negligible due to siltation and encroachment by farmers for agriculture purposes. There are several such villages where ponds/ tanks are in dilapidated condition. These existing village tanks, which are normally silted and damaged, can be modified to serve as recharge structure in case these are suitably located to serve as percolation tanks. Through desilting,

coupled with providing proper waste weir, the village tanks can be converted into recharge structure.

Impact Assessment and Monitoring

Assessment of impact of the artificial recharge schemes implemented is essential to assess the efficacy of structures constructed. It helps in identification of cost-effective recharge mechanisms for optimal recharge into the ground water system. It also helps to make necessary modifications in site selection, design and construction of structures in future. The monitoring system should be designed judiciously to monitor impact of these structures individually as well as collectively. Demarcation of the zone of influence of the artificial recharge structure is one of the main objectives of monitoring.

It is proposed to utilize the existing data available with the Government of Rajasthan and CGWB baseline data. For assessment of the impact of proposed measures additional data will be generated by construction of the piezometer at suitable and strategic sites.

It is proposed to construct 15 piezometer, at suitable locations for monitoring of water levels, in the vicinity of proposed recharge structure. The depth of the piezometer may vary from 20 to 50 mbgl. This will help in assessing the impact of the project implementation.

Since the implantation of the Plan involves institutional framework, it is proposed to constitute State Level Technical Coordination Committee (SLTCC) and District Level Technical Coordination Committee (DLTCC) for proper monitoring and review of the implementation of the Plan.

Financial Outlay of the Plan

The total estimated cost of the Plan is 1.04 cr, which includes Rs 0.75 cr. for ground water recharge activities, 0.24 cr for ground water monitoring (Piezometer construction) and Rs 0.05 cr towards operation and maintenance charges. The tentative cost estimates of the various activities of the Plan are shown in Table 6 & 7.

The tentative cost for different activities is given in table 6. The unit rates are as followed by the Govt. of Rajasthan (BSR). The total estimated cost of the project is **Rs 1.04 Crores.**

Table 7: Tentative cost of different activities

Feasible Artificial Recharge & Water Conservation structures/ activities	Tentative Design	Quantity (in nos. or area in sq. m)	Rainwater harvested (mcm)	Tentative unit cost (in Rs lakh)	Total tentative cost (in Rs lakh)	Expected Annual GW recharge/ conservation (mcm)
Recharge Structures/ Activities						
Recharge shaft within the pond /tanks	Alluvium – Depth 80m, Dia: 10-12” with filter pit	15	0.4359	5	75	0.305
Sub total					75	0.305
Impact assessment & Monitoring						
Piezometer	Up to 80 m bgl	15		0.6	9	
<i>Impact assessment will be carried out by implemneting agency</i>						
O & M - 5% of total cost of the scheme					4.2	
TOTAL					88.2	

Note: Type, number and cost of structure may vary according to site after ground verification

Time Schedule

The project is to be implemented in two years, however impact assessment will be carried out for five years. A time schedule for different activities is given in table 8.

Table 8: Time Schedule

Steps	1 st phase	2 th Phase	3 rd Phase	4 th Phase	5 th Phase	6 th Phase	7 th Phase	8 th Phase
Constitution of State Level Technical Coordination Committee (SLTCC) and District Level Technical Coordination Committee (DLTCC)								
Arranging meeting of SLTCC for provision available under the scheme, request to implementing agencies for submission of DPR								

Scrutiny, recommendations & approval of AR Projects / Schemes in DLTCC & SLTCC							
Forwarding the DPR to Central Ground Water Board (CHQ), New Delhi for approval and issuing of sanction from the Ministry							
Meeting of TCC(CHQ) and release of sanction of funds							
Construction of artificial recharge structures & Monitoring of water levels in the area locally							
Completion and Utilisation certificate							
Impact Assessment and submission of report							

Expected Benefits or outcome of the Plan

Ground water recharge and water conservation Plan of Chirawa block, Jhunjhunun envisages gainful utilization of 0.305 MCM of surplus monsoon runoff for recharging of depleted aquifer system

With the additional recharge and water conservation interventions as proposed in the Plan, it is anticipated that with enhanced recharge and reduction in ground water draft, the stage of ground water development will reduce to 302.82 % from the existing 307.26 %. The projected status of ground water resources and utilization scenario is presented in table 9.

Projected Status of Groundwater Resource & Utilization							
Net G.W. Availability (Ham)	Additional Recharge from RWH & conservation (mcm)	Total Net G.W. Availability after intervention (mcm)	Existing G.W Draft for all purpose (mcm)	Saving of Ground water through projects (mcm)	Net GW draft after interventions (mcm)	Present stage of G.W. development (%)	Projected stage of G.W. Dev. (in %)
20.8381	0.305	21.1431	64.0263	0	64.0263	307.26	302.82

- The implementation of the project would result in additional recharge. The other tangible/ non-tangible benefits of the project are:
- Recharging the ground water will help in arresting the rapid decline in ground water resources and will also ensure improvement in quality of ground water by way of dilution.
- Proposed structures and measures will also enhance the ground water potential and would ensure sustainability of ground water resources.
- Surface runoff water stored or harnessed can be used as supplemental irrigational resources and will reduce the stress on the ground water.
- Besides, it will also help in reducing the amount and spate of storm water being drained by river and controlling soil erosion.