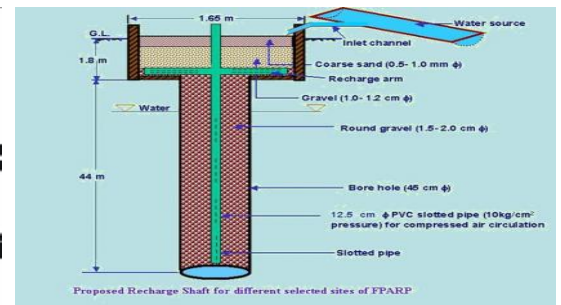
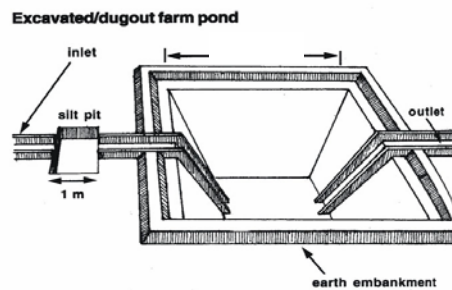




CENTRAL GROUND WATER BOARD
MINISTRY OF WATER RESOURCES,
RIVER DEVELOPMENT & GANGA REJUVENATION
GOVERNMENT OF INDIA



ARTIFICIAL RECHARGE TO GROUND WATER AND WATER CONSERVATION PLAN OF
UDAIPURWATI BLOCK,
DISTRICT JHUNJHUNU, RAJASTHAN

Western Region, Jaipur
January, 2016

**ARTIFICIAL RECHARGE TO GROUND WATER AND WATER CONSERVATION
PLAN BLOCK UDAIPURWATI,
DISTRICT JHUNJHUNU**

Plan at a Glance

1.	Area of the Udaipurwati Block	882.28 Sq.Km.
2.	Area identified for Artificial Recharge	717.1
3.	Dynamic Ground Water Resources (as on 31.03.2011)	
	Net Ground Water Availability	40.93 MCM
	Annual Ground Water Draft	98.34 MCM
	Stage of Ground Water Development	240.26 %
4.	Runoff available in the block	1.4364 MCM
	Volume of water recharged	1.4364 MCM
	Volume of water conserved for other interventions	Nil
5.	Volume of unsaturated aquifer zone available for recharge	2347.954 MCM
6.	Total number of structures to be proposed	
	Recharge structures	
	Existing village pond with recharge shaft/ well	48 shafts in 48 Nos. of existing village ponds
	Water Conservation	
	Farm pond	Nil
	Expected Annual GW recharge	1.006 MCM
	Provision for supplemental irrigation, thus reducing GW withdrawal for irrigation	nil
	Total recharge/ saving of ground water	1.006 MCM
7.	Estimated Cost	2.0664 crore
	Artificial Recharge Plan	1.848 crore
	Water conservation measures	nil
	Piezometer construction	0.12 crore
	Operation and maintenance	0.0984 crore

ARTIFICIAL RECHARGE TO GROUND WATER AND WATER CONSERVATION PLAN BLOCK UDAIPURWATI, DISTRICT JHUNJHUNU

1 INTRODUCTION

The demand of fresh water for agriculture, drinking and industrial uses etc. has significantly increased due to population growth and socio-economic development. As surface water resources in the State of Rajasthan are meagre, the dependability on ground water resources in the State has increased substantially. This has resulted in over exploitation of ground water resources vis a vis depletion of ground water levels in various parts of the State.

The **Udaipurwati Block, district Jhunjhunu** is one of the over exploited blocks of Rajasthan and is under severe stress, as evident from the stage of ground water development, which has attained an alarming level of **240.26%**. In view of over exploitation of ground water resources in the block, ground water resources in the area are under continuous depletion. Thus there is urgent need for taking up suitable water management interventions based on integrated approach, which on one hand includes augmentation of ground water resources through appropriate techniques, and on the other hand requires the adoption of suitable water conservation measures, such as ensuring water use efficiency through creation of additional water storage facility, maintenance/ renovation of existing water bodies etc. Water awareness and capacity building of the stakeholders are also the important attributes of water management interventions as envisaged in the National Water Policy.

Artificial recharge to ground water is one of the most efficient, scientifically proven and cost effective technology to mitigate the problems of over exploitation of ground water resources. The technology serves as a means for restoring the depleted ground water storage, ameliorate the ground water quality problems and also enhance the sustainability of wells in the affected areas. A detailed knowledge of geology, hydrogeology, land use pattern, geomorphology and hydro-meteorological features are however, essential for selection of appropriate artificial recharge techniques as well as design and sites of ground water recharge structures.

As per directions of Ministry of Water Resources, River Development and Ganga Rejuvenation, Government of India and in pursuance to letter no 16-24/M(SML)/CGWB/ARP- OE Blocks/2015-6957, dated 13.7.2015 & 3.8.2015 & letter no 39(43)/TC/CHN/CGWB/2015-7929, dated 4.9.2015 from Central Headquarters, Central Ground Water Board, **the preparation of Artificial Recharge and Rainwater harvesting Plan for the Over exploited blocks in the State of Rajasthan has been taken up** on priority by the Western Region, Central Ground Water Board, Jaipur. Each Plan discusses the broad framework of ground water situation in the block, status of water availability (both surface and ground water), identification of feasible areas for interventions, feasibility of artificial recharge and other water conservation structures, their design considerations, numbers and cost estimates. The expected outcomes of the proposed interventions have also been elucidated in the report

The GIS layers used in the Plan include administrative (upto village level), Hydrogeology, Depth to Water level (pre and post monsoon), geomorphic, drainage, water bodies and the map of tentative locations of proposed interventions.

Methodology:

As per Ground Water Department, Government of Rajasthan direction the basin wise availability of surplus run off is calculated after taking into account 75 % dependability on the rain water for all uses. In furtherance, the sub basins with surplus run off available for recharge were taken into consideration. The block area falling in particular sub basin was taken into account and a proportionate area of the sub-basin draining the block was calculated. Based on this area of sub-basin draining the block, proportionate surplus run off, in the block by the sub basin, for recharge was calculated. Thus was calculated the final amount of surplus run off available for recharge in particular block by one particular sub-basin. The available run off was considered for Recharge through Recharge Shaft (@ 0.03 MCM) and Percolation tank (@ 0.2 MCM). If after allocating water for Recharge through Recharge Shaft, large amount of surface run off was left then the Water conservation through Farm Ponds, along with recharge through Percolation Tanks, was also taken into account. Besides the available run off the Average Water Level for the time span of ten years (Nov., 2005 to Nov. 2014) and the Decadal Water Level trend (Nov., 2005 to Nov. 2014) were also taken into account. The blocks showing average water level more than 5 m bgl and declining water level trend were considered suitable for Artificial Recharge Plan

1.1 Location of the block

The Udaipurwati Block covering an area of 882.28 Sq. Km. falls in southern part of Jhunjhunu District and is located between North latitudes 27°38' & 28°03' and East longitudes 75°22' & 75°44'. As per 2011 census, the total rural population of the Block is 265534 persons consisting of 135830 males & 129704 females. Location map is shown in **Fig 1**.

1.2 Source wise Irrigated Area

Out of total area of 882.28 Sq.Km., an area of 360.54 (40.86%) falls under irrigation. The dug wells/ Tubewells are the only major source of irrigation in Udaipurwati Block. There is no area that falls under canal & pond irrigation. The wells irrigate total 360.54 Sq.Km. area in this Block.

Fig: 1

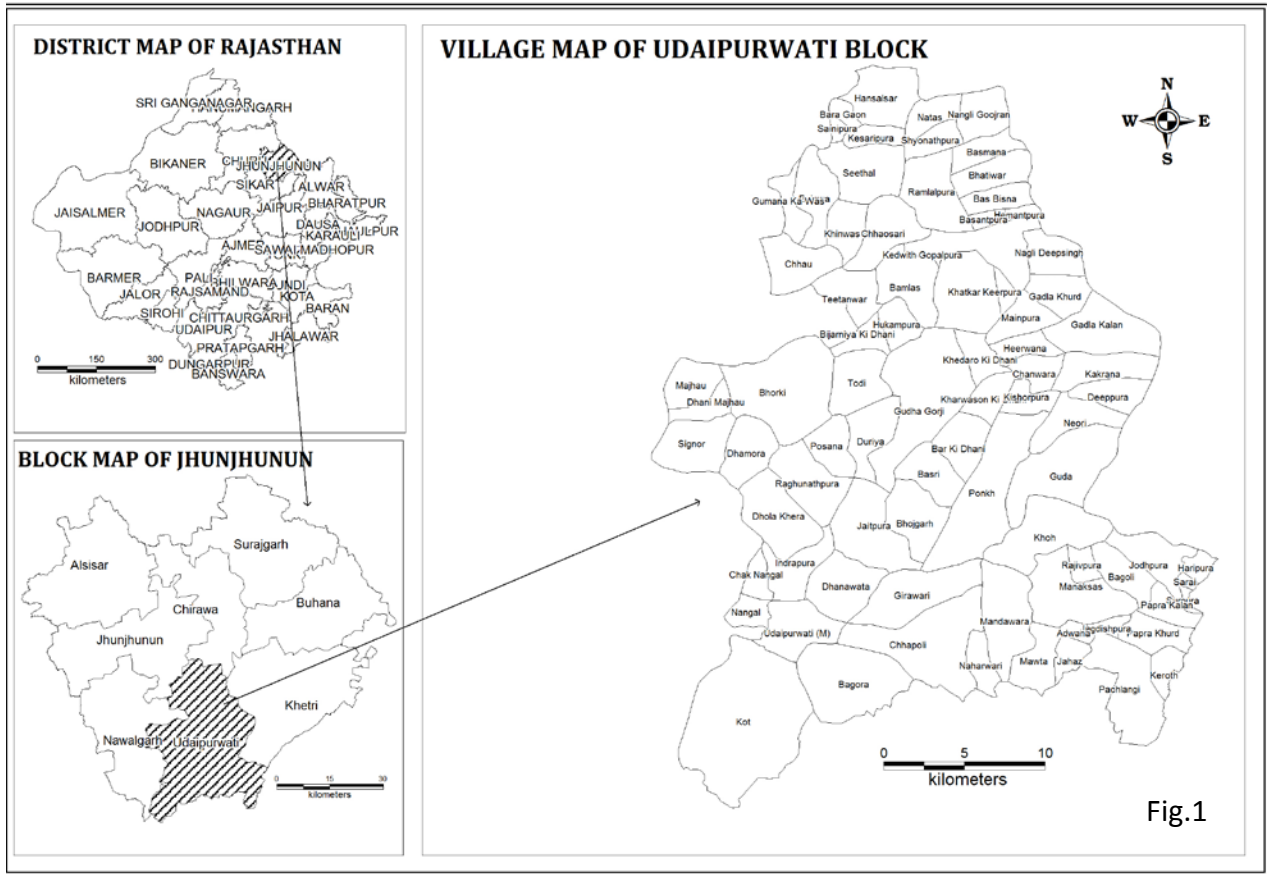


Fig.1

1.3 Physiography & Drainage

Physiographically (**Fig. 2**), the block is characterized by presence of sandy & Aeolian plains, alluvial plains, hills & buried pediments. The minimum and maximum elevation of Block is 351.3 m. amsl and 1077.6 m. amsl, respectively.

There is no perennial river flowing in this Block. It is drained by ephemeral Kantli river in south eastern, eastern & northern parts. The block falls under Shekhawati (Mendha) basin. The map showing drainage and water bodies in the Udaipurwati block is shown in **Fig. 3**.

Fig: 2

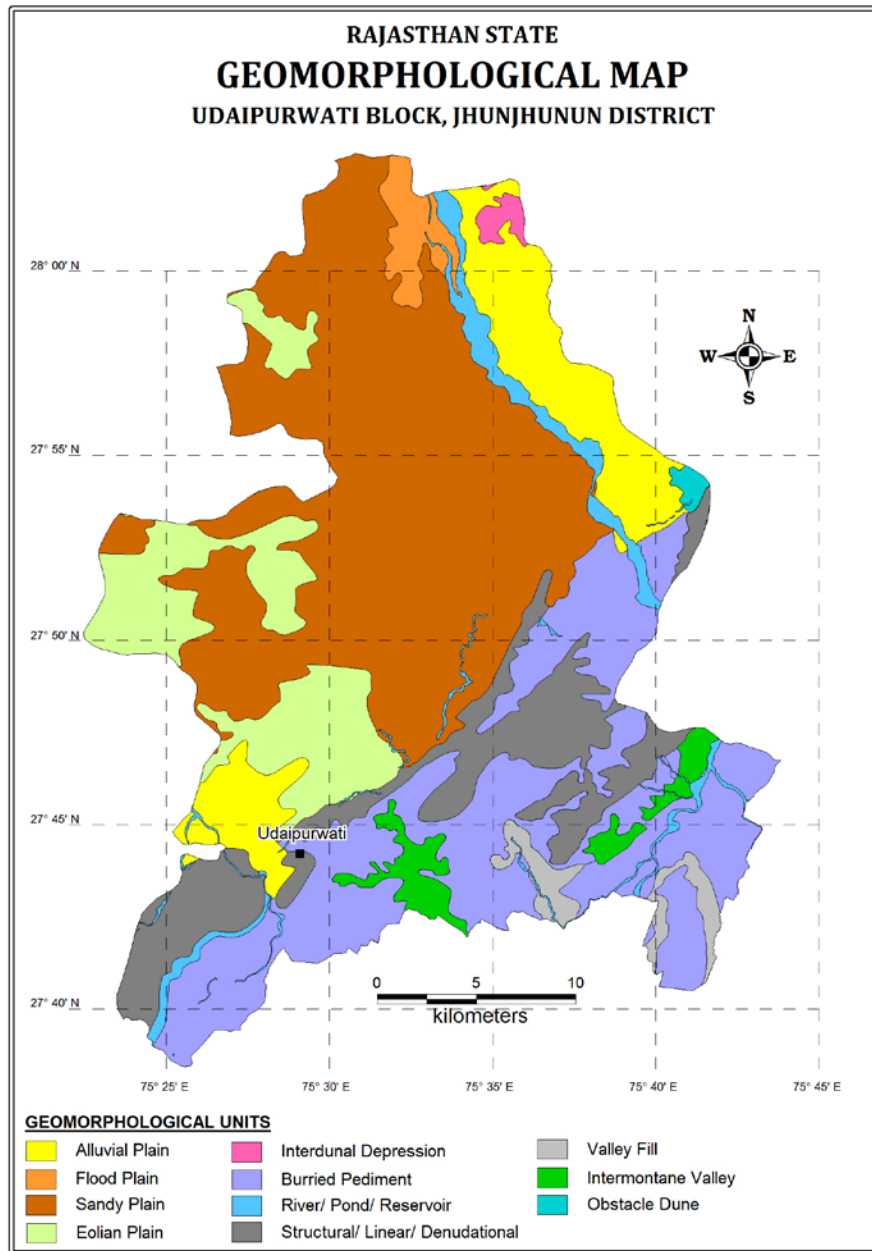
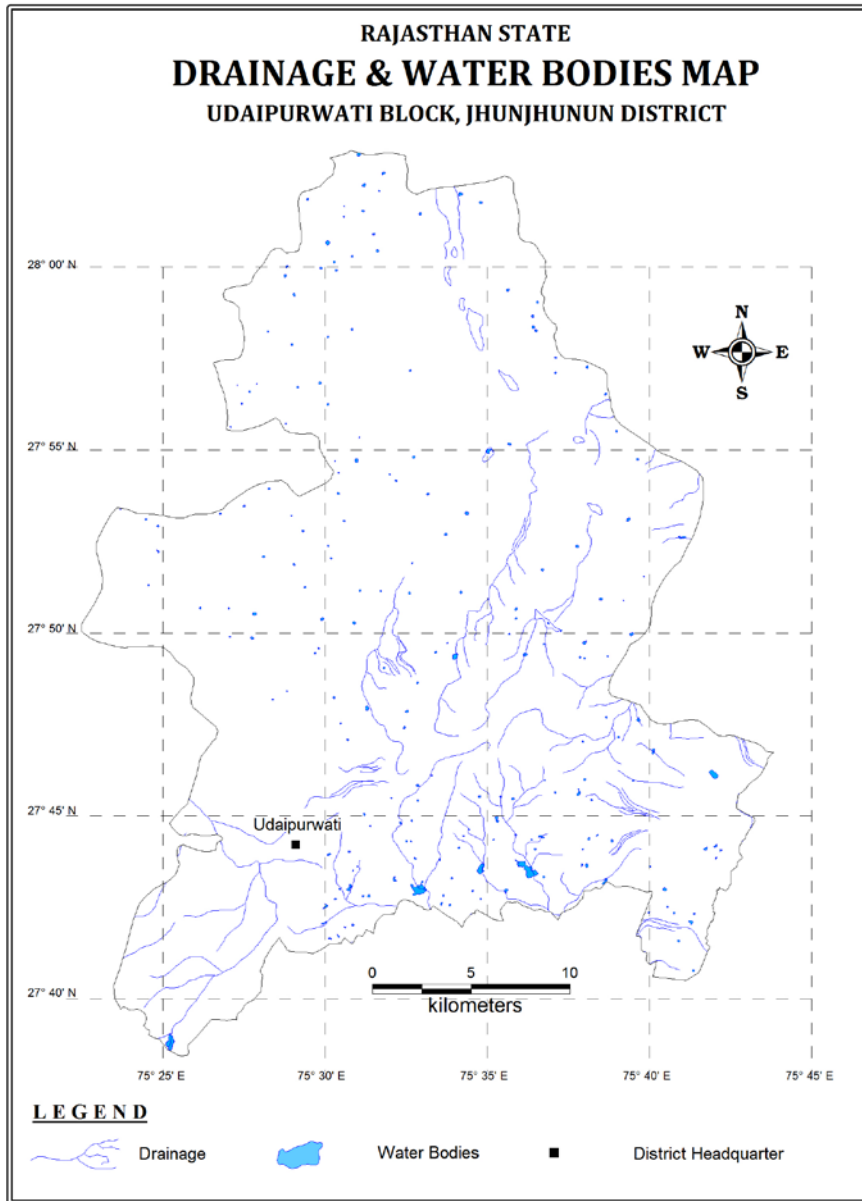


Fig: 3



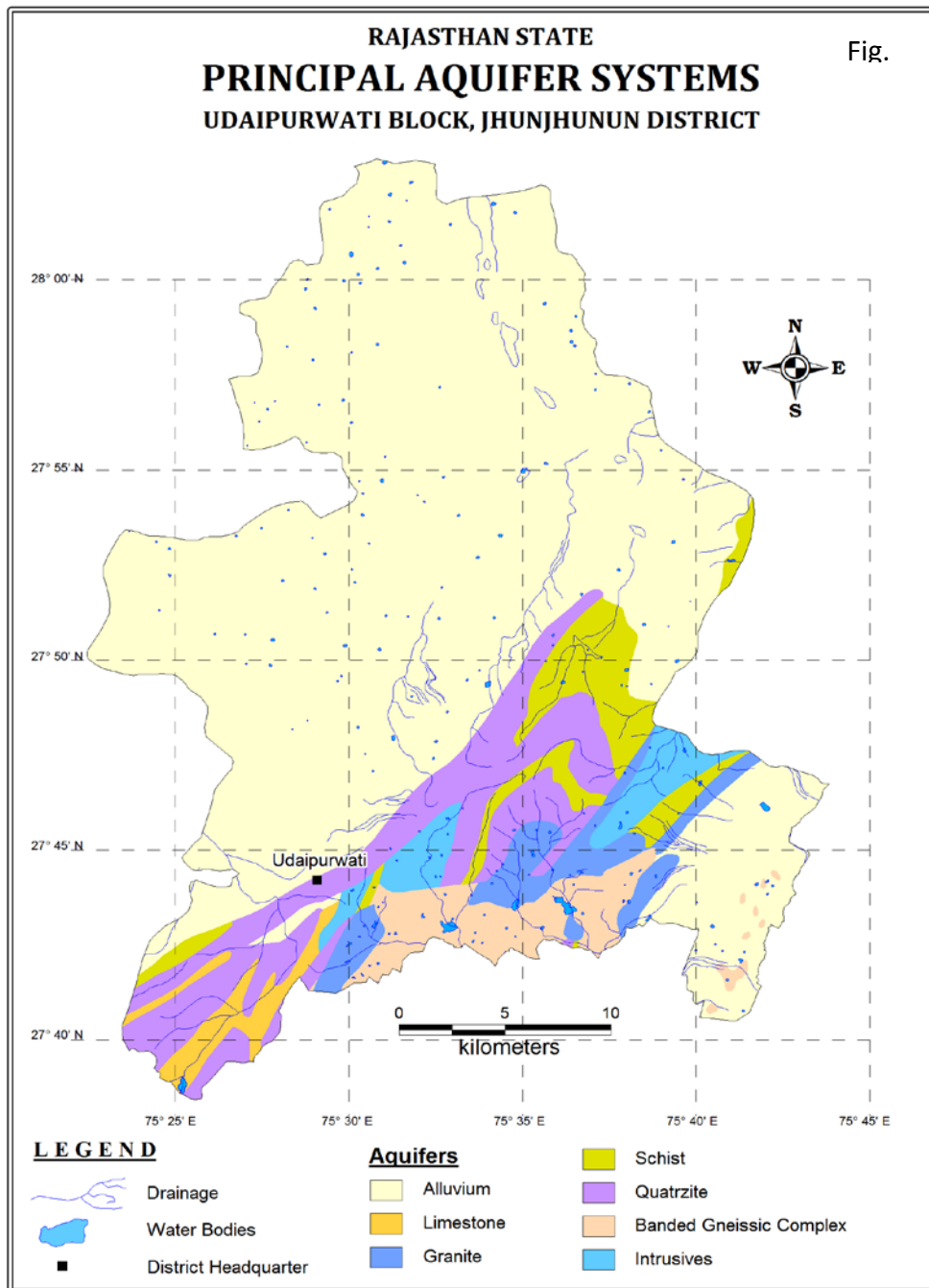
1.4 Rainfall

The climate of the block is semi arid. The Normal annual rainfall of block is 525.83mm. Failure of rains has observed several times. The available data of rainfall indicates that larger part of annual rainfall is received through SW monsoon during July to September. In March, there is transition to summers. The summer months of April to June are the hottest months and temperature upto 48°C is reached. From end of June to September, south western monsoon is received. The months of July and August are the wettest months, receiving about 70% of total annual rainfall. Winter season starts from November and lasts upto February. Average temperature during these months remains between 15° to 18°C, however from end of December to mid January, temperature remains in the range of 5° to 10°C.

1.5 Hydrogeology of the Area

Quaternary alluvium is the principal water bearing formation and hard rocks of Delhi Super Group including post Delhi Intrusive form ancillary aquifers in the block. Alluvium (composed of sand, silt, clay, kankar and gravel) forms the principal and potential aquifer in the area. Out of total geographical area of 867.28 Sq. Km, areas of 577.32 Sq. Km. (66.57%) under Older alluvium & 139.78 Sq,Km. (16.12%) under Quartzites form potential zones and remaining 150.18 Sq. Km.(17.31%) area is represented by hills. Ground water occurs under unconfined to semi-confined conditions in the primary porosity i.e. pore spaces. Quartzite, schist, phyllite, gneisses and limestone of Delhi Super Group including granites, amphibolites and pegmatites of post Delhi intrusives form the ancillary aquifer. Ground water occurs under unconfined condition in the weathered mantle (ranging in thickness from 10 to 15 m) and under unconfined to semi-confined conditions in deep seated secondary porosity i.e. fractures, joints, contacts etc. of hard formation. In general yield of wells tapping alluvial aquifers varies from 2.92 to 15 lps depending on the thickness of saturated granular zones and yield of the wells tapping hard rock aquifers in ranges from 0.83 to 12.08 lps. The map showing aquifer system in the Udaipurwati block is shown in **Fig. 4**

Fig: 4



Ground Water Level:

As per Average decadal depth to water level (from November, 2005 to November, 2014), the block majorly falls in water level range 20-50 m bgl range. **(Fig 5)**

The average decadal depth to water level is 34.74 mbgl for Pre monsoon & 34.25 mbgl for Post monsoon. According to depth to water level maps of May 2014 & November 2014, water level ranging between 20 to 40 mbgl in entire eastern parts and more than 40 mbgl in entire western parts has been observed. The Map showing Depth to water level for May, 2014 and November, 2014 is shown in **Fig 6 & 7**.

Fig: 5

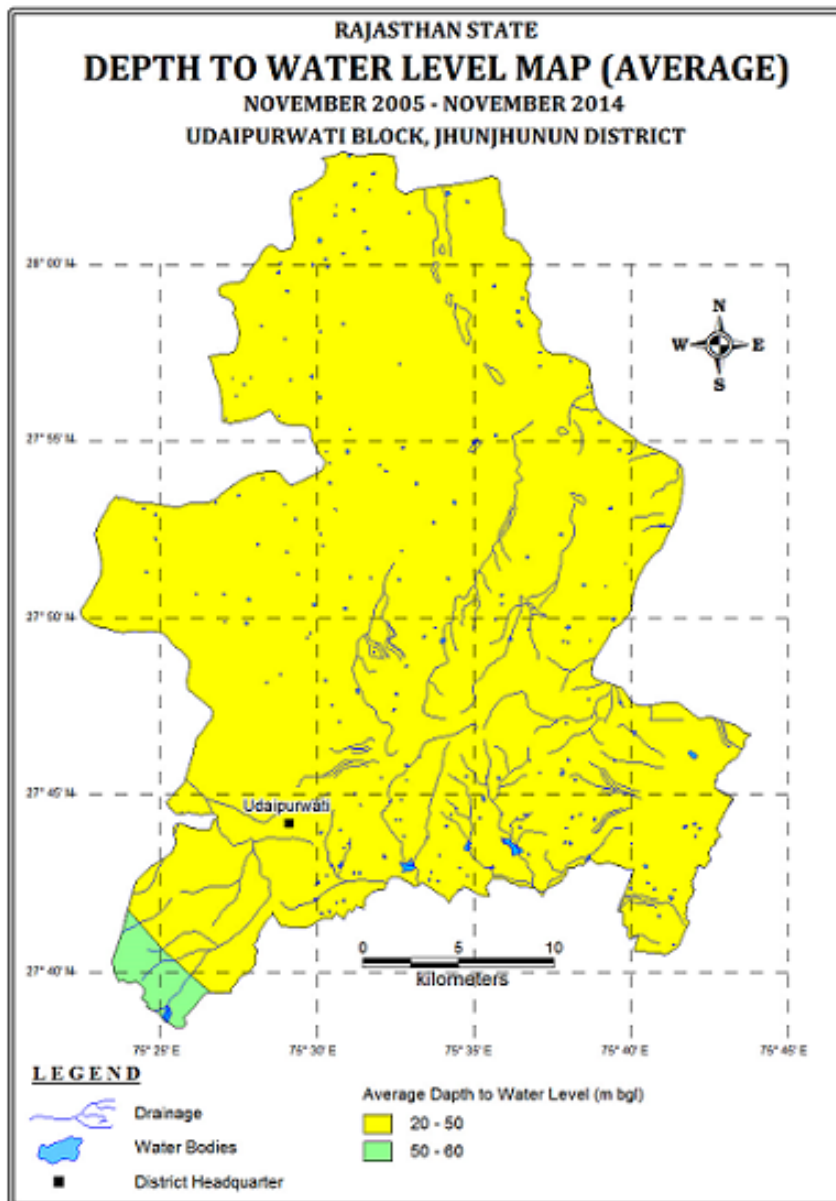


Fig: 6

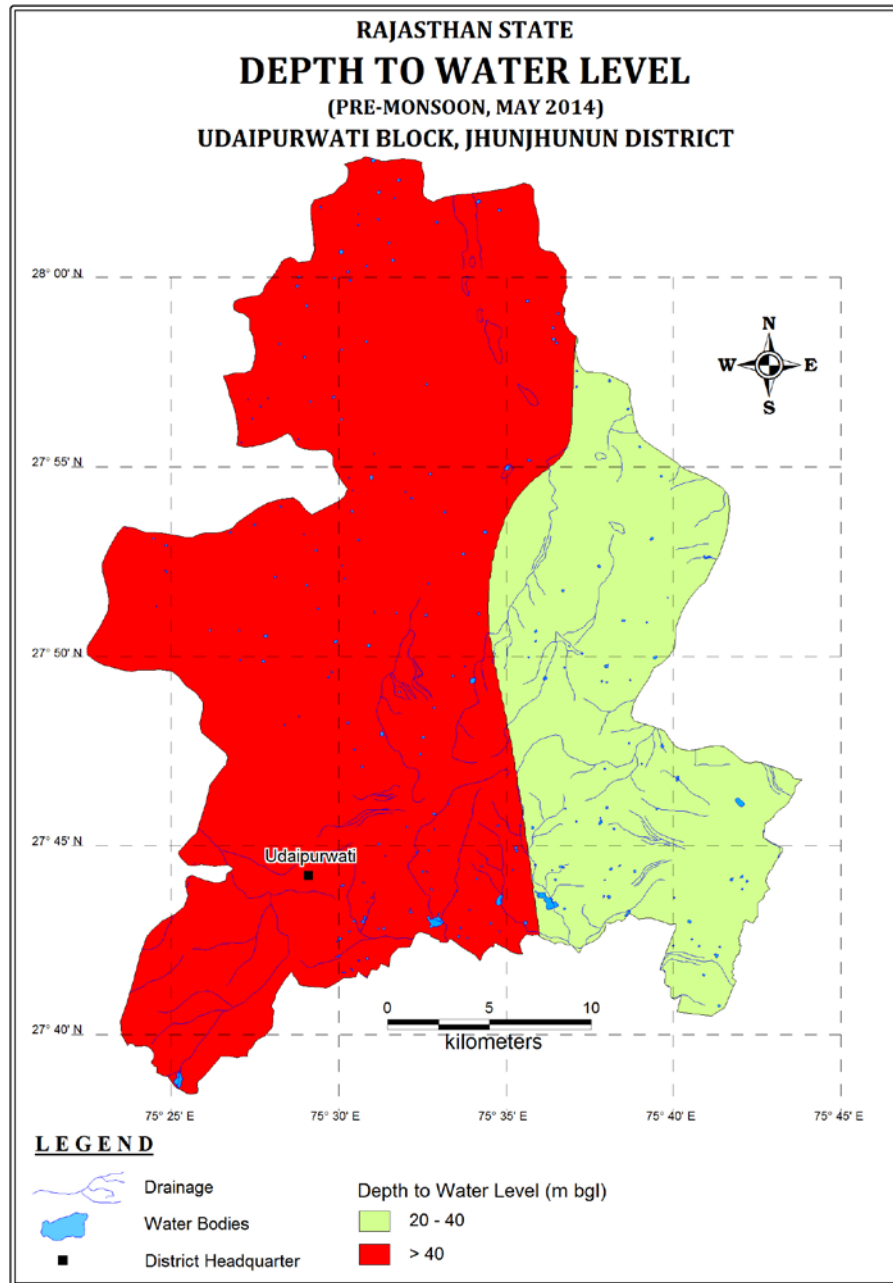
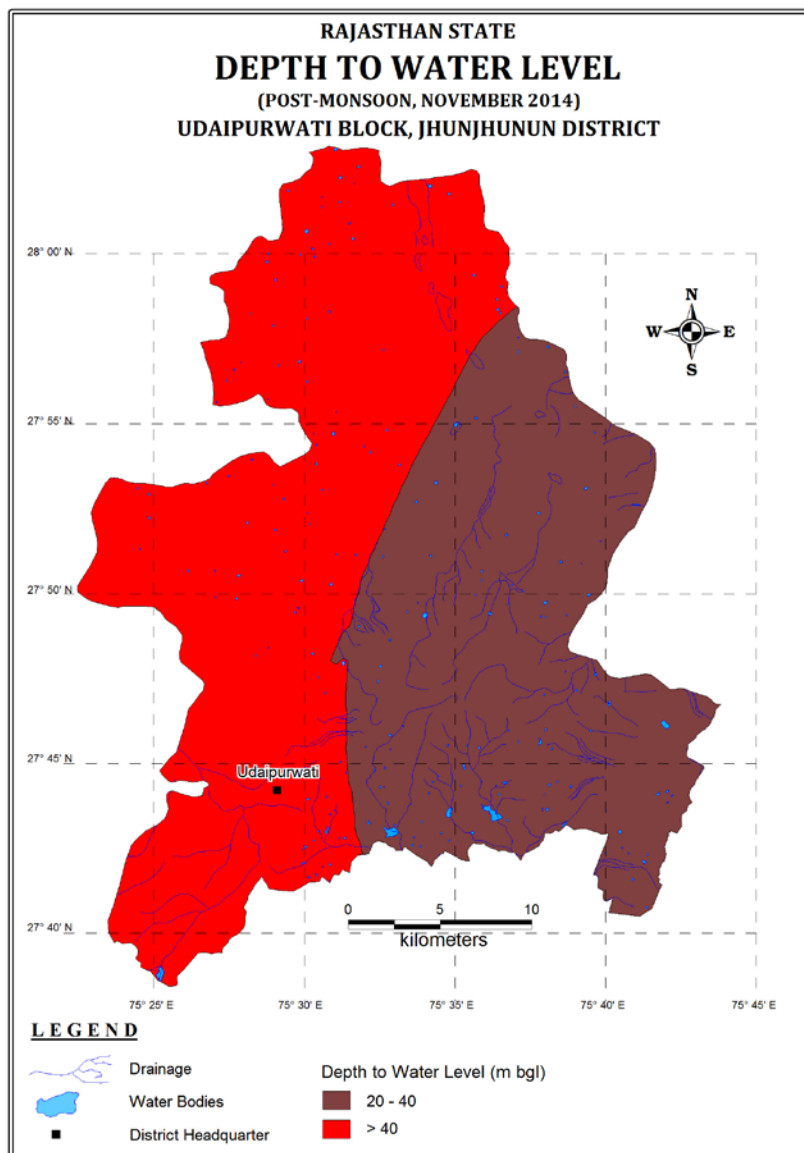


Fig: 7

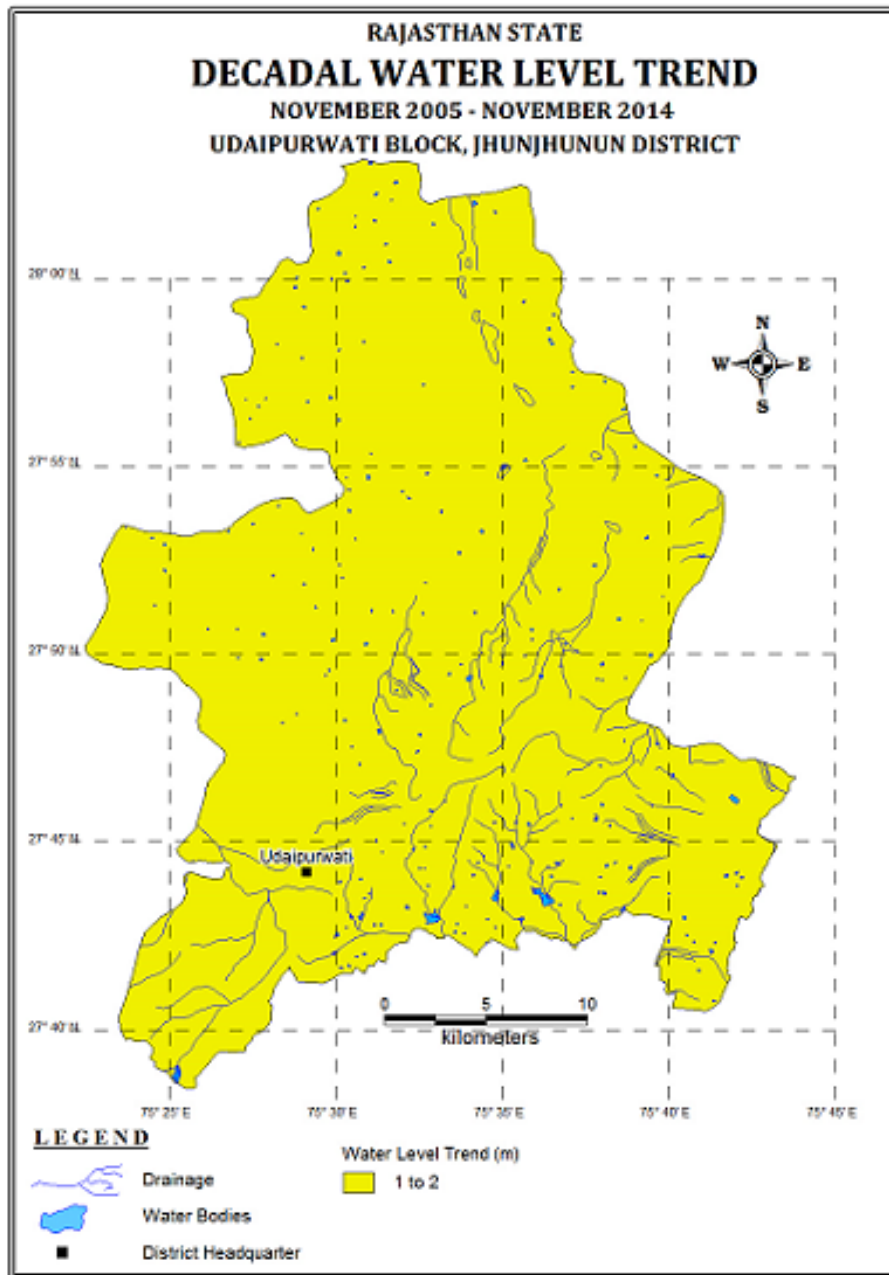


Water Level Trend:

The hydrographs of wells monitored by CGWB & GWD from 1997 to 2010 shows declining water level trend. A water level fall varying from 1.64 to 1.84 m/year during pre monsoon and 1.34 to 1.98 m/year during post monsoon has been observed for this period.

As per the Decadal Water level trend (from November, 2005 to November, 2014), the declining trend is visible in the block. The fall majorly show trend of 1 to 2. The map of Decadal Water Level Trend is shown in **fig. 8**.

Fig: 8



1.6 Subsurface Hydrogeology

As inferred from borehole data of the Udaipurwati Block; Alluvium, Schist, Phyllite & Quartzite form the aquifers. However, the ground water in Schist, Phyllite, Quartzite only occurs in shallow weathered parts or fractures due to absence of primary porosity. Exploratory bore hole data has revealed the presence of aquifer system down to the depth of 100 m in general. The depth of drilling ranges from 32 to 160.2 mbgl and the average discharge ranges from 0.33 to 45.42 lps. The quality of water has 2 major problems, i.e., Salinity & Fluoride. Transmissivity value varies between 230 to 1915 m²/day and Stortivity varies from 0.0000548 to 0.0067.

1.7 Dynamic Ground Water Resource

The Ground water Resources for the block are given in Table 1 as per 31.03.2011 Ground Water Resource Assessment. The Net Ground water Availability of Block is 4093.20 ham and Annual Ground water draft is 9834.34 ham. Due to this excessive draft over recharge, stage of Ground water development has reached 240.26%.

Table 1: Ground Water Availability, Utilization and Stage of Development Udaipurwati Block, Jhunjhunu District

Natural Discharge During Non Monsoon Period	164.45 ham
Net Ground Water Availability	4093.20 ham
Annual Ground Water Draft	9834.34 ham
Net Ground water Availability for Future Irrigation Use	0 ham
Stage of Ground Water Development	240.26%
<i>Source: Ground Water Resource Assessment 31.03.2011</i>	

Proposal for Artificial Recharge

Generally the Artificial recharge structures suitable in this type of area are Check dams/ Anicuts/ Percolation tanks and Recharge Shafts/ Recharge wells. Since the water levels are quite deep in the block (upto 40 mbgl), the structures like Percolation tanks and Check dams are not very suitable. Besides a large number of Check dams/ Anicuts have already been constructed by different State Government Agencies at most of the feasible locations. Considering this aspect it is felt that Recharge Shaft/ Recharge wells are the most suitable structures.

Almost all the villages in the State of Rajasthan have one or two village ponds & other ponds. With time, these ponds get silted & hardly any water percolates downward. Also, any excess water coming into the pond goes away as a run off due to limited storage capacity. This surplus runoff can very well be utilized for recharging the ground water. Since natural recharge from these ponds is limited due to siltation and ground water levels are deep, the most effective ground water structure would be Recharge Shaft/ Recharge well constructed within the pond itself.

Such a Recharge well needs to be designed in a manner that maximum surplus water is utilized for recharge as well as sufficient water is retained in the pond for local use.

The design of typical Recharge well is given in Figure 9. The major features required are.

1. The well should have sufficient diameter for recharge- 10 to 12 inch diameter well with bottom screen/ opening just above the highest water level.
2. The well should have screen/ opening at the top, which should be at least 1.5m above the bed level of the pond.
3. The upper opening should be surrounded with filter pack comprising graded filter media of medium, coarse sand & gravel, so that the Recharge well does not get silted.

The opening for inflow to the well has been proposed at 1.5m above Bed level of pond. This is necessary to ensure that the pond retains sufficient water for use by villages. However, this may necessitate further deepening of pond itself so that the pond is 3-4 m deep. A Single well as discussed above would be suitable for a pond upto area of about 2.5 ha. Therefore, more number of such Recharge wells may be required for larger ponds.

Surface water availability

As per the studies carried out by Water Resources Department, Govt of Rajasthan there is hardly any surplus water available for further development at 75% dependability. However, after taking into account the availability of source water in the basins of Rivers flowing in the State proportionate amount of surplus runoff available in particular block by particular sub basin was calculated.

Accordingly about 1.4364 MCM has been considered for recharge plan in the block. Optimum utilization of rainwater runoff depends on availability of land, feasible conditions, etc. Surface water availability, allocation and number of structures are presented in table 2.

Table 2: Source water for artificial recharge and number of recharge structure

District	District code	Block	Block code	Area of Block (Sq.km.)	Potential area suitable for recharge (Sq.km.)	Type of Aquifer	Area feasible for artificial recharge (Sq km)	Sp Yield
JHUNJHUNUN	RJ21	UDAIPURWATI	RJ2108	882.28	717.10	alluvium	577.32	0.100
JHUNJHUNUN	RJ21	UDAIPURWATI				hard rock	139.78	0.030

Table 2 (contd): Source water for artificial recharge and number of recharge structure

Average DTW (mbgl) NOV 2013	Thickness of unsaturated zone 3 m below ground level (m)	Volume of sub surface storage space available for artificial recharge (MCM)	Sub Basin	Surplus available in the block (in Mm3)	Surplus water used in Recharge Shaft (RS)	No. of RS 0.03 MCM/RS	Remaining Surplus water for Percolation tank (PT)	No. of PT (0.2 MCM/PT)
42	39	2251.548	Kantli	0.7364	0.7364	25	0	0
25.99	22.99	96.406	Kantli	0.7000	0.7000	23	0	0
		Total		1.4364	1.4364	48	0	0

Feasible Artificial Recharge and water conservation structures

A wide spectrum of techniques is in vogue, which are being implemented to recharge the ground water reservoir, conserve the utilizable rainfall and enhance the water use efficiency. Based on prevailing field conditions, out of total block area of 882.28 sq km practically 717.1 sq km area is feasible for implementing recharge measures. Based on available information about the area such as ground water scenario, hydrogeology, hydrology, topography, rainfall pattern, drainage, soil cover, utilizable rainfall etc. scope for various interventions has been studied and assessment of suitable areas, tentative design and costs of structures has been worked out in the present plan.

Identification of feasible areas

Udaipurwati block is having ground water level ranging 20 to 50m below ground level and as per dynamic ground water resource estimation, the block is over exploited with stage of ground water development at 240.26%. The Udaipurwati block is feasible for recharge due to presence of permeable zone above water table, favorable land slope and availability of water from rainfall.

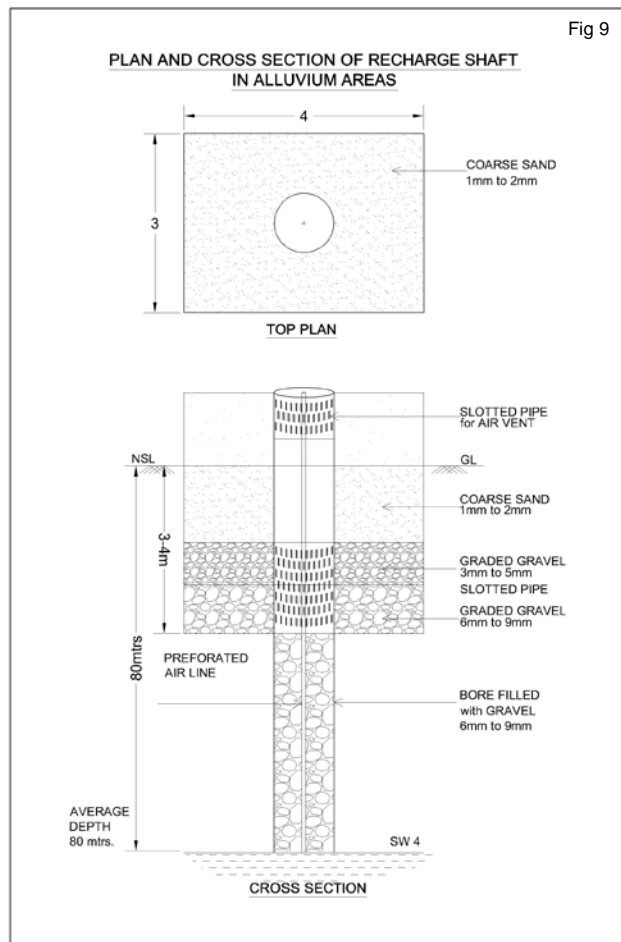
Generally the Artificial recharge structures suitable in this type of area are Check dams/ Anicuts/ Percolation tanks and Recharge Shafts/ Recharge wells. Since the ground water levels are quite deep in the block, the structures like ani-cuts and Check dams are not suitable and also their construction is regulated. Considering these aspect the proposal for Recharge Shaft/ Recharge wells have been firmed up in the present Planar the most suitable structures in Udaipurwati block.

Details of Ground Water Recharge Measures

1. Existing Village Pond with recharge shaft/wells

Almost all the villages in the State of Rajasthan have one or two village ponds & other ponds. With time, these ponds get silted & hardly any water percolates downward. Also,

any excess water coming into the pond goes away as a run off due to limited storage capacity. This surplus runoff can very well be utilized for recharging the ground water and also for enhancing conservation of water that can be further used for irrigation, thereby saving ground water withdrawal. Since natural recharge from these ponds is limited due to siltation and ground water levels are deep, the most effective ground water structure considered under the Plan is Recharge Shaft/ Recharge well constructed within the pond itself.



The above mentioned recharge well has been designed in a manner that maximum surplus water would likely to be utilized for recharge as well as sufficient water is retained in the pond for local use.

The model design of recharge well has been worked out in consultation with Ground Water Department, Government of Rajasthan and presented in Fig 9. The major features required are:

1. The well should have sufficient diameter for recharge- 10 to 12 inch diameter well with bottom screen/ opening just above the highest ground water level.
2. The well should have screen/ opening at the top, which should be at least 1.5m above the bed level of the pond.

3. The upper opening should be surrounded with filter pack comprising graded filter media of medium, coarse sand & gravel, so that the Recharge well does not get silted.

The opening for inflow to the well has been proposed at 1.5m above Bed level of pond. This is necessary to ensure that the pond retains sufficient water for use by local consumers. However, this may necessitate further deepening of pond itself so that the pond is 3-4 m deep. A Single well as discussed above would be suitable for a pond upto area of about 2.5 ha. Therefore, more number of such Recharge wells are envisaged for larger ponds.

Tentative Location of Recharge shaft

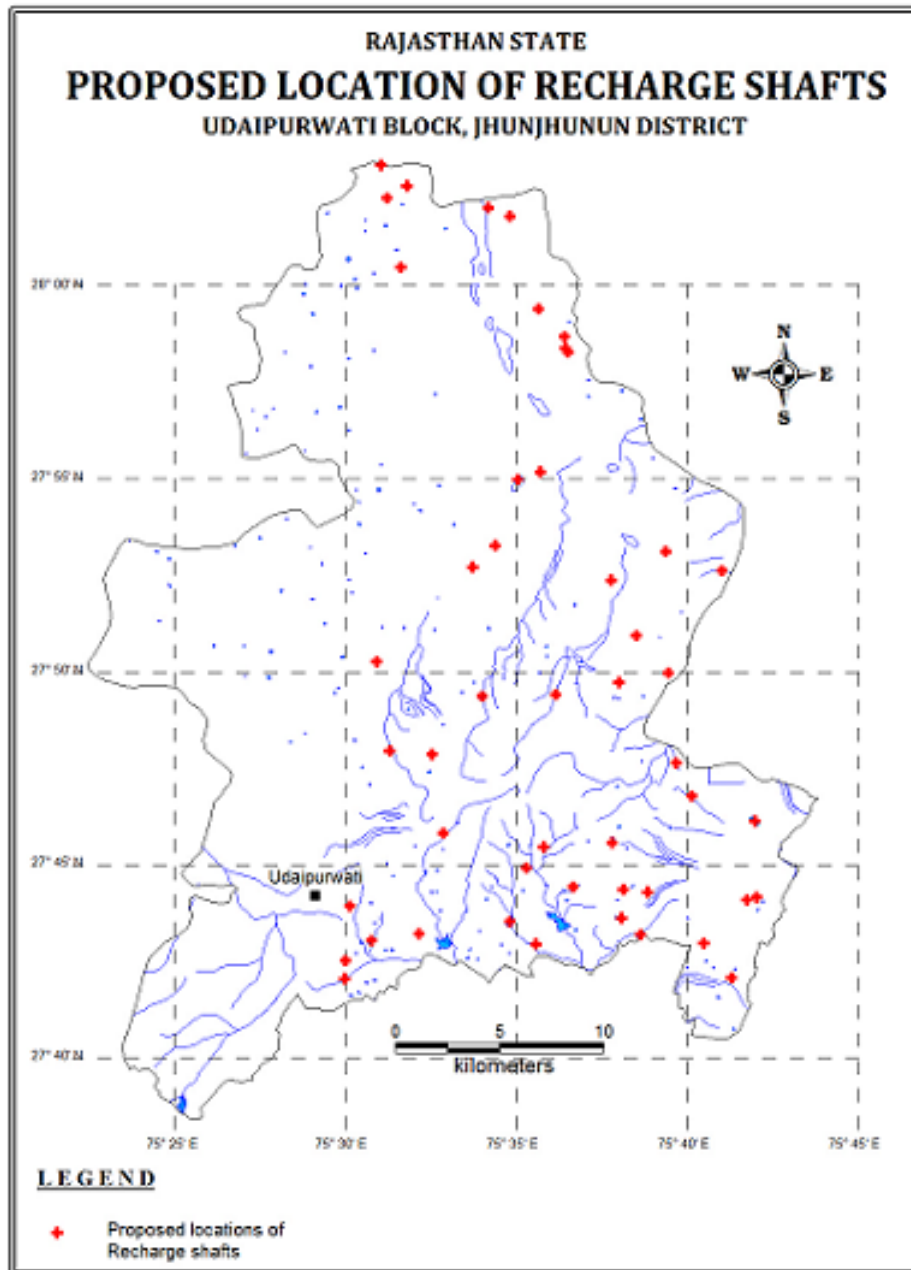
The tentative location of villages for construction of recharge shaft/well in existing village pond and their cost estimates are shown in Fig 10 and Table 3. The plan proposes construction of 48 recharges shafts/ wells in 48 identified existing village ponds at an estimated cost of 184.8 lacs.

Table 3: Tentative locations of village for village pond with recharge shaft

S.N	Village	Long	Lat	Pond Area (Ha)	No of Shaft	Formation	Unit cost (Rs in lac)	Cost of Shaft (Rs in lac)
1	Adwana	75.647	27.739	1.201	1	Hard rock	2.6	2.6
2	Bagoli	75.669	27.780	1.202	1	Hard rock	2.6	2.6
3	Bas Bisna	75.607	27.978	1.203	1	Soft	5	5
4	Chhapoli	75.502	27.733	1.231	1	Hard rock	2.6	2.6
5	Hemantpura	75.608	27.971	1.232	1	Soft	5	5
6	Papra Khurd	75.700	27.736	1.307	1	Soft	5	5
7	Bagora	75.499	27.701	1.318	1	Hard rock	2.6	2.6
8	Bhojgarh	75.542	27.798	1.323	1	Soft	5	5
9	Girawari	75.548	27.764	1.356	1	Hard rock	2.6	2.6
10	Adwana	75.635	27.740	1.359	1	Hard rock	2.6	2.6
11	Nangli Goojran	75.580	28.030	1.364	1	Soft	5	5
12	Mandawara	75.597	27.758	1.380	1	Hard rock	2.6	2.6
13	Keerpura	75.595	27.920	1.390	1	Soft	5	5
14	Gudha Gorji	75.562	27.878	1.407	1	Soft	5	5
15	Kakrana	75.630	27.873	1.436	1	Soft	5	5
16	Bhatiwari	75.594	27.990	1.506	1	Soft	5	5
17	Guda	75.642	27.849	1.586	1	Hard rock	2.6	2.6

18	Seethal	75.527	28.008	1.660	1	Soft	5	5
19	Hemantpura	75.607	27.973	1.661	1	Soft	5	5
20	Mandawara	75.588	27.749	1.703	1	Hard rock	2.6	2.6
21	Jahaz	75.634	27.727	1.727	1	Hard rock	2.6	2.6
22	Hansalsar	75.530	28.043	1.788	1	Soft	5	5
23	Gudha Gorji	75.515	27.838	1.789	1	Soft	5	5
24	Khoh	75.661	27.794	1.899	1	Hard rock	2.6	2.6
25	Hansalsar	75.520	28.038	1.904	1	Soft	5	5
26	Chhapoli	75.536	27.721	1.910	1	Hard rock	2.6	2.6
27	Kakrana	75.656	27.885	1.958	1	Soft	5	5
28	Gudha Gorji	75.573	27.888	2.014	1	Soft	5	5
29	Papra Khurd	75.696	27.735	2.026	1	Soft	5	5
30	Mandawara	75.611	27.741	2.033	1	Hard rock	2.6	2.6
31	Guda	75.657	27.833	2.078	1	Hard rock	2.6	2.6
32	Guda	75.633	27.829	2.172	1	Hard rock	2.6	2.6
33	Pachlangi	75.675	27.717	2.281	1	Soft	5	5
34	Guda	75.603	27.824	2.309	1	Hard rock	2.6	2.6
35	Pachlangi	75.688	27.701	2.318	1	Soft	5	5
36	Bagora	75.500	27.709	2.352	1	Hard rock	2.6	2.6
37	Mandawara	75.593	27.716	2.433	1	Hard rock	2.6	2.6
38	Hansalsar	75.517	28.052	2.936	1	Soft	5	5
39	Jahaz	75.644	27.720	2.896	1	Hard rock	2.6	2.6
40	Nangli Goojran	75.570	28.033	2.936	1	Soft	5	5
41	Bhojgarh	75.521	27.799	2.998	1	Soft	5	5
42	Manaksas	75.630	27.760	3.223	1	Hard rock	2.6	2.6
43	Deeppura	75.684	27.877	3.247	1	Soft	5	5
44	Bagora	75.512	27.717	3.631	1	Hard rock	2.6	2.6
45	Khatkar	75.584	27.916	4.079	1	Soft	5	5
46	Basri	75.567	27.823	5.743	1	Hard rock	2.6	2.6
47	Jodhpura	75.699	27.769	10.531	1	Soft	5	5
48	Naharwari	75.580	27.726	11.663	1	Hard rock	2.6	2.6
	Total				48			184.8

Fig: 10



B. Revival, repair of water bodies

The existing ponds and tanks in loose their storage capacity as well as the natural ground water recharge through these water bodies has also become negligible due to siltation and encroachment by farmers for agriculture purposes. There are several such villages where ponds/ tanks are in dilapidated condition. These existing village tanks, which are normally silted and damaged, can be modified to serve as recharge structure in case these are suitably located to serve as percolation tanks. Through desilting, coupled with providing proper waste weir, the village tanks can be converted into recharge structure.

Impact Assessment and Monitoring

Assessment of impact of the artificial recharge schemes implemented is essential to assess the efficacy of structures constructed. It helps in identification of cost-effective recharge mechanisms for optimal recharge into the ground water system. It also helps to make necessary modifications in site selection, design and construction of structures in future. The monitoring system should be designed judiciously to monitor impact of these structures individually as well as collectively. Demarcation of the zone of influence of the artificial recharge structure is one of the main objectives of monitoring.

It is proposed to utilize the existing data available with the Government of Rajasthan and CGWB baseline data. For assessment of the impact of proposed measures additional data will be generated by construction of the piezometer at suitable and strategic sites.

It is proposed to construct 20 piezometers, at suitable locations for monitoring of water levels, in the vicinity of proposed recharge structure. The depth of the piezometer may vary from 20 to 50 mbgl. This will help in assessing the impact of the project implementation.

Since the implantation of the Plan involves institutional framework, it is proposed to constitute State Level Technical Coordination Committee (SLTCC) and District Level Technical Coordination Committee (DLTCC) for proper monitoring and review of the implementation of the Plan.

Financial Outlay of the Plan

The total estimated cost of the Plan is 2.0664 cr, which includes Rs 1.848 cr for ground water recharge activities, 0.12 cr for ground water monitoring (Piezometer construction) and Rs 0.0984 cr towards operation and maintenance charges. The tentative cost estimates of the various activities of the Plan are shown in Table 4 & 5.

The tentative cost for different activities is given in table 4 & 5. The unit rates are as followed by the Govt. of Rajasthan (BSR). The total estimated cost of the project is **Rs 2.0664 Crores**.

Table 4: Cost of the recharge structures

Cost Recharge Shaft Rs in crs (Unit cost Rs 0.05 cr for soft rock and 0.026cr. for hard rock)
Alluvium – 1.25
Hard rock – 0.598

Table 5: Tentative cost of different activities

Feasible Artificial Recharge & Water Conservation structures/ activities	Tentative Design	Quantity (in nos. or area in sq. m)	Rainwater harvested (mcm)	Tentative unit cost (in Rs lakh)	Total tentative cost (in Rs lakh)	Expected Annual GW recharge/ conservation (mcm)
Recharge Structures/ Activities						
Recharge shaft within the pond /tanks	Alluvium – Depth 80m, Dia: 10-12” with filter pit	25	0.7364	5	125	0.5155
	Hard rock: Depth –60m, Dia 10-12”with filter pit	23	0.70	2.6	59.8	0.49
Sub total					184.8	1.006
Impact assessment & Monitoring						
Piezometer	Up to 80 m bgl	20		0.6	12	
<i>Impact assessment will be carried out by implemneting agency</i>						
O & M - 5% of total cost of the scheme					9.84	
TOTAL					206.64	

Note: Type, number and cost of structure may vary according to site after ground verification

Time Schedule

The project is to be implemented in two years, however impact assessment will be carried out for five years. A time schedule for different activities is given in table 6.

Table 6: Time Schedule

Steps	1 st phase	2 th Phase	3 rd Phase	4 th Phase	5 th Phase	6 th Phase	7 th Phase	8 th Phase
Constitution of State Level Technical Coordination Committee (SLTCC) and District Level Technical Coordination Committee (DLTCC)								
Arranging meeting of SLTCC for provision available under the scheme, request to implementing agencies for submission of DPR								
Scrutiny, recommendations & approval of AR Projects / Schemes in DLTCC & SLTCC								
Forwarding the DPR to Central Ground Water Board (CHQ), New Delhi for approval and issuing of sanction from the Ministry								
Meeting of TCC(CHQ) and release of sanction of funds								
Construction of artificial recharge structures & Monitoring of water levels in the area locally								
Completion and Utilisation certificate								
Impact Assessment and submission of report								

Expected Benefits or outcome of the Plan

Ground water recharge and water conservation Plan of Udaipurwati block, Jhunjhunun envisages gainful utilization of 1.006 MCM of surplus monsoon runoff for recharging of depleted aquifer system.

With the additional recharge and water conservation interventions as proposed in the Plan, it is anticipated that with enhanced recharge and reduction in ground water draft, the stage of ground water development will reduce to 234.497 % from the existing 240.26%. The projected status of ground water resources and utilization scenario is presented in table 7.

Net G.W. Availability (Ham)	Additional Recharge from RWH & conservation (mcm)	Total Net G.W. Availability after intervention (mcm)	Existing G.W Draft for all purpose (mcm)	Saving of Ground water through projects (mcm)	Net GW draft after interventions (mcm)	Present stage of G.W. development (%)	Projected stage of G.W. Dev. (in %)
40.9320	1.006	41.938	98.3434	0	98.3434	240.26	234.497

- The implementation of the project would result in additional recharge. The other tangible/ non-tangible benefits of the project are:
 - Recharging the ground water will help in arresting the rapid decline in ground water resources and will also ensure improvement in quality of ground water by way of dilution.
 - Proposed structures and measures will also enhance the ground water potential and would ensure sustainability of ground water resources.
 - Surface runoff water stored or harnessed can be used as supplemental irrigational resources and will reduce the stress on the ground water.
 - Besides, it will also help in reducing the amount and spate of storm water being drained by river and controlling soil erosion.