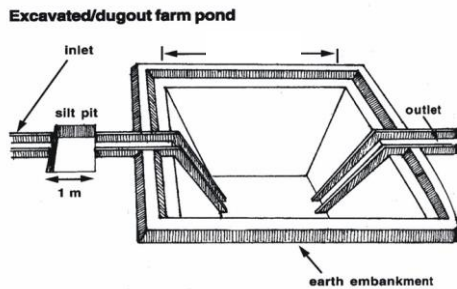




Plan on Artificial Recharge to Groundwater and Water Conservation in Palladam Firka, Palladam Taluk, Tirupur District, Tamil Nadu



By

Central Ground Water Board
South Eastern Coastal Region
Rajaji Bhawan, Besant Nagar
Chennai

Content

| S.No. | TOPIC |
|-------|--|
| | At a Glance |
| 1 | Introduction |
| 2 | Objectives |
| 3. | Study area details |
| | 3.1 Location |
| | 3.2 Geomorphological Setup |
| | 3.3 Landuse and Soil |
| | 3.4 Drainage |
| | 3.5 Rainfall |
| | 3.6 Hydrogeology |
| | 3.7 Dynamic Ground water Resources |
| 4 | Spatial data integration/ conservation |
| 5 | Planning for recharge |
| | 5.1 Justification of the artificial recharge |
| | 5.2 Availability of surplus surface water for artificial recharge or conservation |
| | 5.3 Proposed interventions including tentative location of artificial recharge structures and water conservation |
| | 5.3.1 Artificial recharge |
| | 5.3.1.1 Check Dam /Nala Bund |
| | 5.3.1.2 Recharge shaft |
| | 5.3.1.3. Revival , repair of water bodies |
| | 5.3.2. Water Conservation Measure |
| | 5.3.2.1 Farm Pond |
| | 5.3.2.2 Micro irrigation system |
| 6. | Tentative Cost Estimation |
| 7. | Implication modalities |
| | a) Time schedule |
| | b) Operation and Maintenance |

| AT GLANCE | |
|--|---|
| Name of Firka | Palladam |
| Taluk | Palladam |
| District | Tirupur |
| State | Tamil Nadu |
| Total area Sq.km | 120.2538 |
| Total Area Suitable for Recharge in Sq.Km | 120.2538 |
| Lat. & Lon. | 10° 55' 40"to 11° 04'12" & 77° 13' 32"to 77°23' 31". |
| Rainfall | 546 mm |
| Monsoon | 413 mm |
| Non- Mon soon | 133 mm |
| Geology | Weathered & Fractured Gneiss, Granites and Charnockites |
| WATER LEVEL | |
| Pre – Monsoon (May -2015) | 2.7 to 12.7 |
| Post - Monsoon (Jan_2016) | 1.5 to 6.5 |
| GROUND WATER RESOURCES ESTIMATION | |
| Replenish able ground water resources | 9.1366 |
| Net ground water available | 8.223 |
| Ground water draft for irrigation | 13.7295 MCM |
| Groundwater draft for domestic & industrial water supply | 2.3157 MCM |
| Total ground water draft | 16.0452 MCM |
| Stage of ground water development (%) | 195.127 % |
| Uncommitted surface runoff available for the Firka | 7.449 MCM |
| Total volume of weathered zone | 14.43 MCM |
| Total aquifer volume available for recharge | 7.945 MCM |
| ARTIFICIAL RECHARGE /CONSERVATION MEASURES | |
| Structures Proposed (tentative) | |
| Masonry Check dam | 9 |
| Nalla Bund | 18 |
| Revival, repair of pond, tanks with recharge shaft | 20 |
| Only shafts in larger tanks | 20 |
| Farm Pond | 100 Unit |
| Improving Water Efficiency/ Saving (Micro irrigation system for 100 ha) | 0.70 MCM |
| Expected recharge | 2.39.MCM |
| Excepted total groundwater recharge/ saving | 3.09 MCM |
| Tentative total cost of the project | Rs. 9.02 Cr |
| Expected raise in water level by recharging/saving. | 1.69 m |

Plan on Artificial Recharge to Groundwater and Water Conservation in Palladam firka, Palladam Taluk, Tirupur taluk district, Tamil Nadu

1. Introduction

India is the largest user of groundwater in the world. Food grain security of the country is largely dependent on water resources and groundwater resources play major role in irrigation sector. Imprints of Over-Exploitation on groundwater resources are being observed as steep deepening of water levels, drying of shallow groundwater abstraction structures, ingress of salinity in fresh aquifers etc. which signal towards taking necessity of emergent action for artificial recharge and rainwater harvesting by utilizing surplus runoff and maintaining groundwater resources at sustainable stage.

In Tamil Nadu dependency on groundwater has increased many folds during the recent years and the groundwater extraction for irrigation, domestic and industries have resulted in lowering of water levels, long-term water level declining trend and even drying up of wells. In order to regulate the groundwater development, Central Ground Water Board in association with State Ground Water Departments has computed Dynamic Groundwater Resources and categorized blocks as Over Exploited, Critical, Semi Critical and Safe.

Out of 1129 firkas (assessment units) in Tamil Nadu the groundwater situation in 374 firkas overexploited, 48 firkas critical, 235 firkas semi-critical, 437 firkas safe and 35 firkas are saline. Various measures such as rainwater harvesting, artificial recharge and water use efficiency are successfully practiced by some NGOs, Central and State govts., which need replication at larger scale in close coordination with State govt. agencies and stakeholders so that capacity building of state implementing agencies and awareness of stakeholders towards artificial recharge and rainwater harvesting can be made.

2. Objectives of the scheme

Objectives of the proposed scheme are

- To upscale recharge activities, supplement additional groundwater resources by harvesting surplus runoff, sustainability of groundwater resources at shallow depths
- Recovery of over-exploited groundwater areas by implementing artificial recharge measures in groundwater stress areas.
- Conservation, development and sustainable management of natural resources including their use.

3. Study area details

3.1 Location

The total area of Palladam firka is 120.2538 sq.km and Palladam firka lies between North latitudes 10°55' 00 "to 11° 04' 12" and east longitudes 77° 13' 32"to 77°23' 31". Location map of Palladam firka is given in Figure 1.

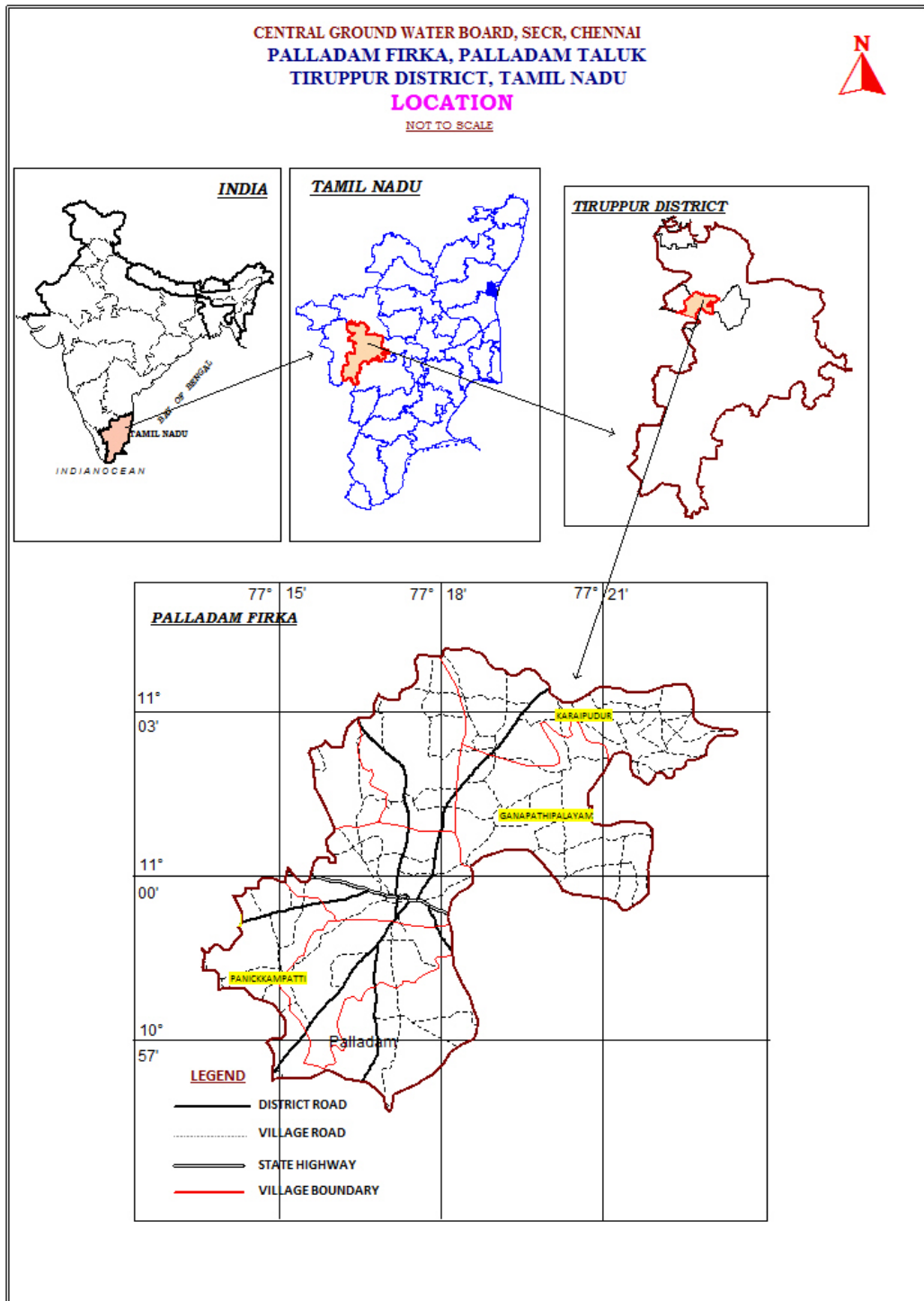


Figure 1. Location map of Palladam firka

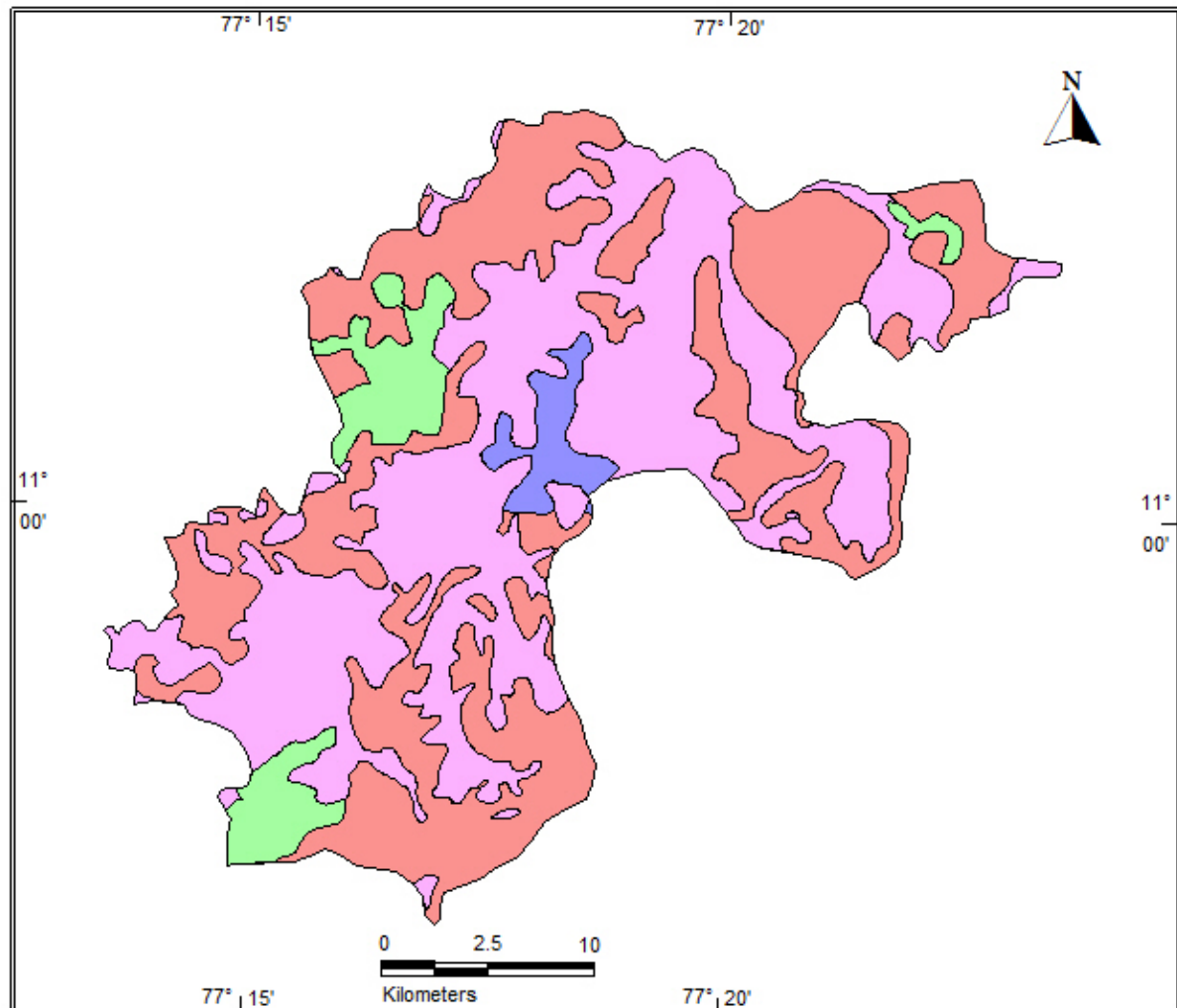
3.2 Geomorphological Set up

In the Palladam firka area it is seen that weathered Shallow Pediplain covers an area of 46% followed by dissected/undissected land forms of 43% of the total geographical area. Moderate Pediplain and inselbers are also covers a significant area of the firka. The various geomorphological units with its % of coverage area are given in table 1. and shown in figure 2.

Table 1. Various geomorphological units with its % of coverage area in Palladam firka

| LANDFORMS | Area in Sq.km | % of Area |
|---------------------------------|---------------|-----------|
| INSELBERG | 3.37 | 2.70 |
| PEDIPLAIN (WEATHERED) MODERATE | 8.72 | 6.98 |
| DISSECTED/UNDISSECTED | 54.28 | 43.50 |
| PEDIPLAIN (WEATHERED) SHALLOW | 58.42 | 46.82 |

GEOMORPHOLOGY MAP
PALLADAM FIRKA, PALLADAM TALUK
TIRUPPUR DISTRICT



LEGEND

- DISSECTED/UNDISSECTED
- BURRIED PEDIMENT MODERATE
- PIEDMONT ZONE
- BURRIED PEDIMENT SHALLOW

Figure 2 showing Geomorphology of Palladam firka

3.3 Land use and soil

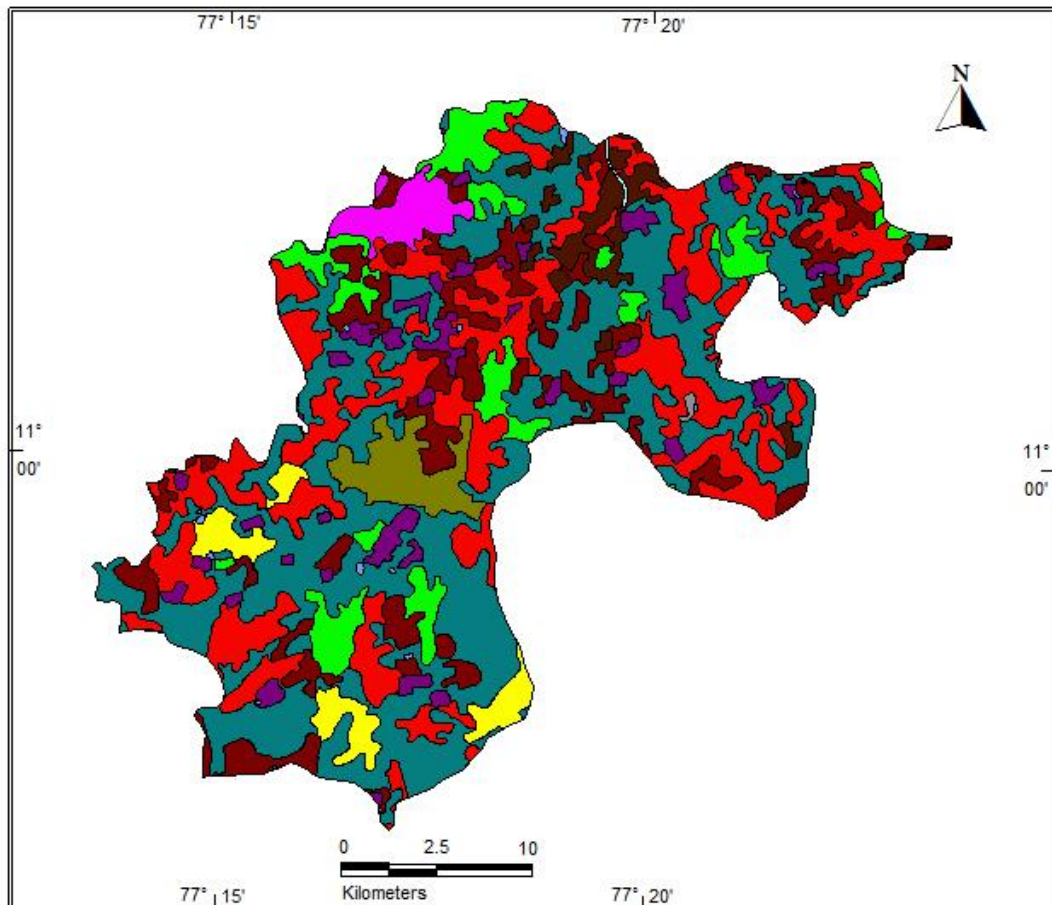
The soil of the Palladam firkais Black cotton soil and gravelly loam soil calcareous, red soil also seen in some parts of the firka. Mostly sand to loamy sand and characterized by a hard and compact layer of lime. The texture varies from sandy loam to loamy sand with occurrence of quartz fragments on the surface. Due to the presence of montmorillonite type of clay minerals, the soil exhibit high cracking and swelling properties.

Table 3 Showing the area and % on type of Landuse in Palladam firka

| Type of Land Use | Area in Sq.km | % of Area |
|-------------------------------|----------------------|------------------|
| RIVER / STREAM | 0.11 | 0.09 |
| OTHERS | 0.11 | 0.09 |
| RESERVOIR / LAKE / TANK | 0.26 | 0.21 |
| LAND WITH SCRUB | 2.73 | 2.19 |
| INDUSTRIAL AREA | 3.56 | 2.85 |
| TOWN AND CITIES | 3.81 | 3.05 |
| LAND WITHOUT SCRUB | 4.10 | 3.28 |
| RURAL SETTLEMENTS VILLAGES | 6.13 | 4.92 |
| FALLOW | 9.24 | 7.40 |
| PLANTATION | 15.76 | 12.63 |
| DRY CROP | 30.96 | 24.81 |
| WET CROP | 48.02 | 38.48 |

The land use pattern of the Palladam firka is given in figure 3. Predominantly the most of the area is characterised by the agricultural activity dominated with wet crop, dry crop and plantation. About 94.74 Sq.km out of total area which makes about 75.92% of the land use in agriculture. (Source: IRS, Anna university, Chennai Tamil Nadu). This area is highly suitable for water conservation and recharge. Fallow land, settlements, towns and industrial usage is in noticeable area.

LANDUSE MAP
PALLADAM FIRKA, PALLADAM TALUK
TIRUPPUR DISTRICT

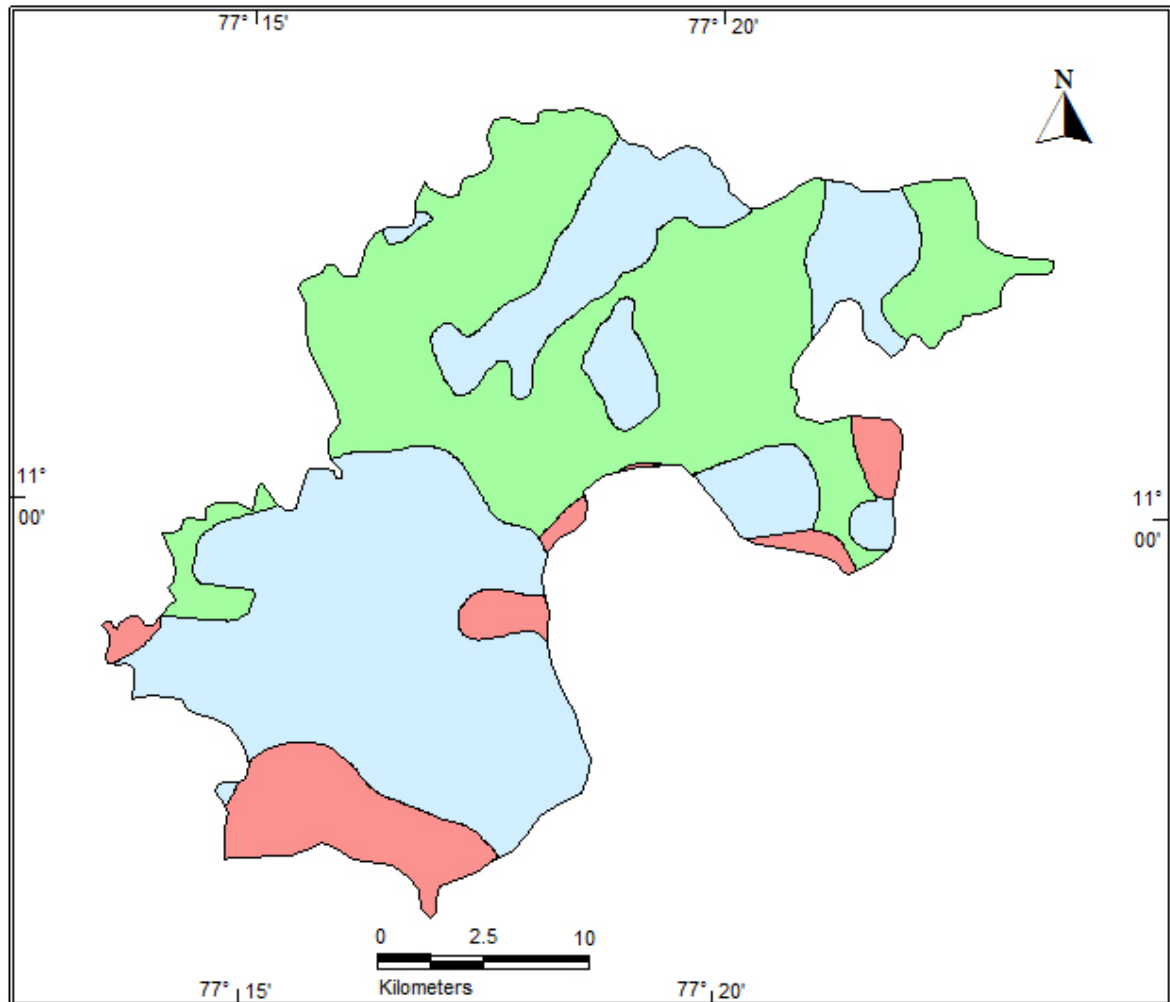


LEGEND

- DRY CROP
- FALLOW
- INDUSTRIAL AREA
- LAND WITH SCRUB
- LAND WITHOUT SCRUB
- OTHERS
- PLANTATION
- RESERVOIR / LAKE / TANK
- RIVER / STREAM
- RURAL SETTLEMENTS VILLAGES
- TOWN AND CITIES
- WET CROP

Figure 3 a showing Landuse map of Palladam firka

SOIL MAP
PALLADAM FIRKA, PALLADAM TALUK
TIRUPPUR DISTRICT



LEGEND

- HAPLUSTERTS
- USTORTHENTS
- USTROPEPTS

Figure 3 b showing of soil map of Palladam firka

3.4 Drainage

Palladam area is drained by River Noyil. The major drainage patterns observed is Dendritic to sub-dendritic. The drainage from southwest to north-northeast. Basin sub soil water is used to irrigate the lands. Tanks and surface water bodies are spread over the entire firka. The drainage pattern is the dendritic and sub-dendritic. The drainage map of Palladam firka is given in Fig 4.

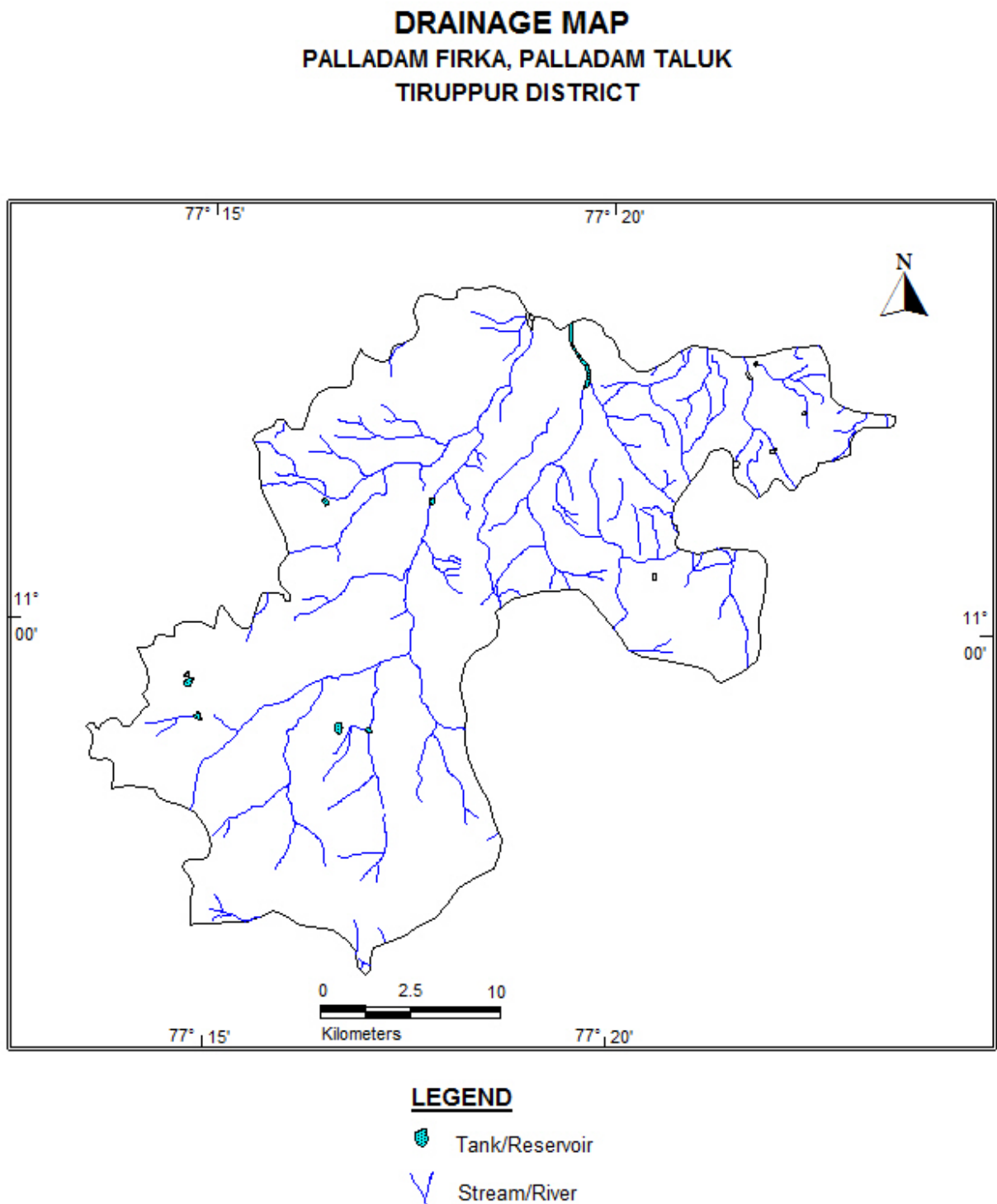


Figure 4 showing Drainage map of Palladam firka

3.5 Rainfall

The northeast monsoon is active between October and December, which forms the principal source for the recharge of groundwater. The southwest monsoon stretches from June to September. During the winter and hot seasons, the rainfall is scanty. The area falls under tropical climate with temperature in the summer months of March to May. The average temperature varies from 26 to 40°C. The area has a hot tropical climate. Highest temperatures were recorded during the months of April and May with temperatures reaching 40°C. The weather in the plains during the summer i.e., from April to June is generally dry and hot. Mornings in general are more humid than the afternoons, with the humidity exceeding 78% on an average. In the period between June to November the afternoon humidity exceeds 66% on an average. In the rest of the year the afternoons are drier, the summer afternoons being the driest.

| Taluk | Name of Firkas | Area in sq.km | Monsoon rainfall (Jun to Dec) In m | Non monsoon rainfall (Jan – May) In m | Total Rainfall In m |
|----------|----------------|---------------|------------------------------------|---------------------------------------|---------------------|
| Palladam | Palladam | 120.2538 | 0.413 | 0.133 | 0.546 |

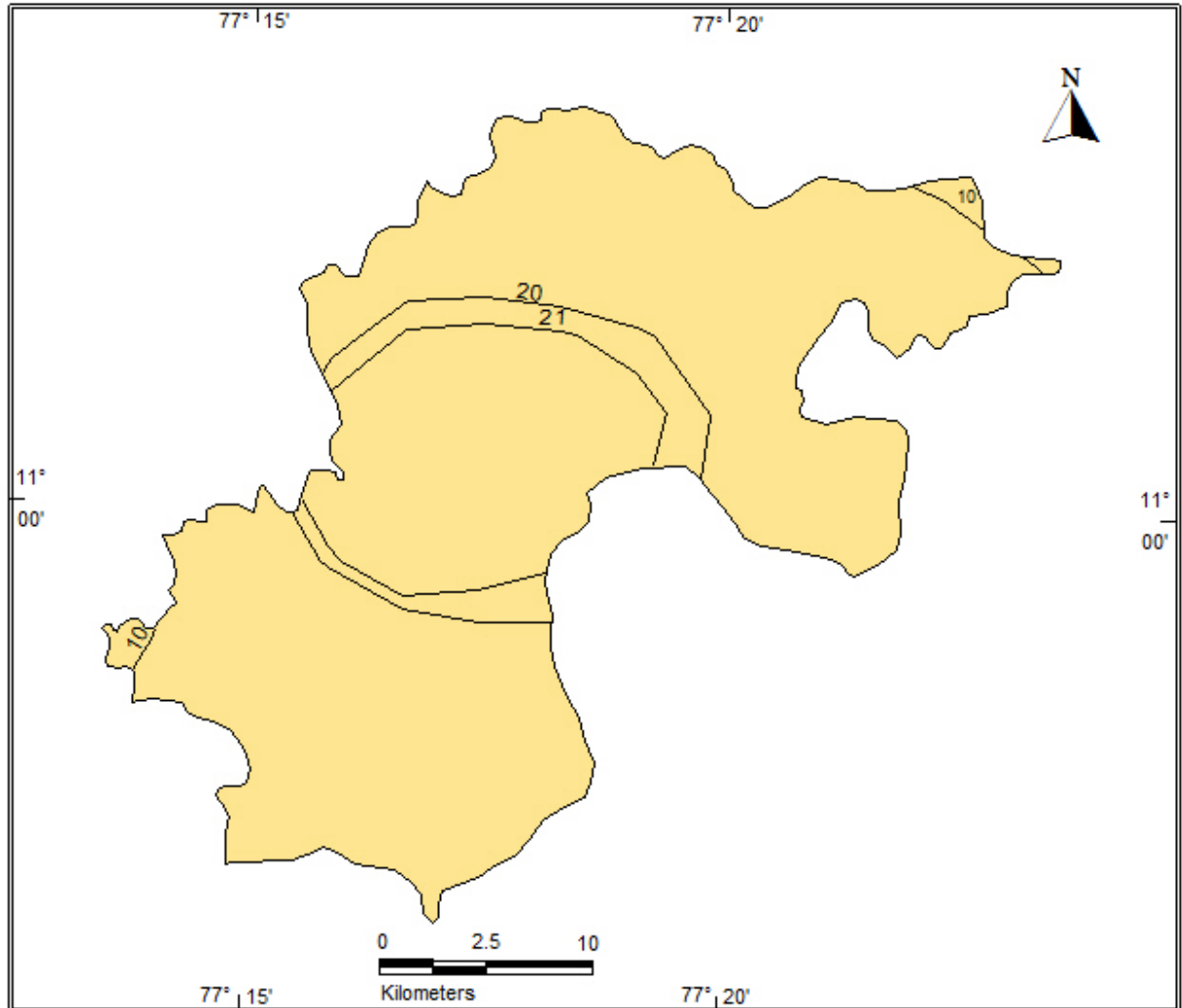
3.6 Hydrogeology

Groundwater occurs in all the crystalline formations of oldest Achaean and Recent Alluvium. The occurrence and behaviour of groundwater are controlled by rainfall, topography, geomorphology, geology, structures etc.

Ground water is occurring in phreatic conditions in weathered and fractured gneiss rock formation. The weathering is controlled by the intensity of weathering and fracturing. Dug wells as well as bore wells are more common ground water abstraction structures in the area. The diameter of the dug well is in the range of 7 to 10 m and depth of dug wells range from 15 to 18 m bgl. The dug wells yield up to 1 lps in summer months and few wells remain dry. The yield is adequate for irrigation for one or two crops in monsoon period.

The depth of wells varies from 6.64 to 17 m bgl. The present water levels in the firka is in the range of 2.7 to 12.7 m bgl during pre-monsoon (May 2015) and from 1.2 to 6.5 m bgl during post monsoon (January 2016). The hydrogeological map of Karadivavi firka is given in Figure 5.

HYDROGEOLOGY MAP
PALLADAM FIRKA, PALLADAM TALUK
TIRUPPUR DISTRICT

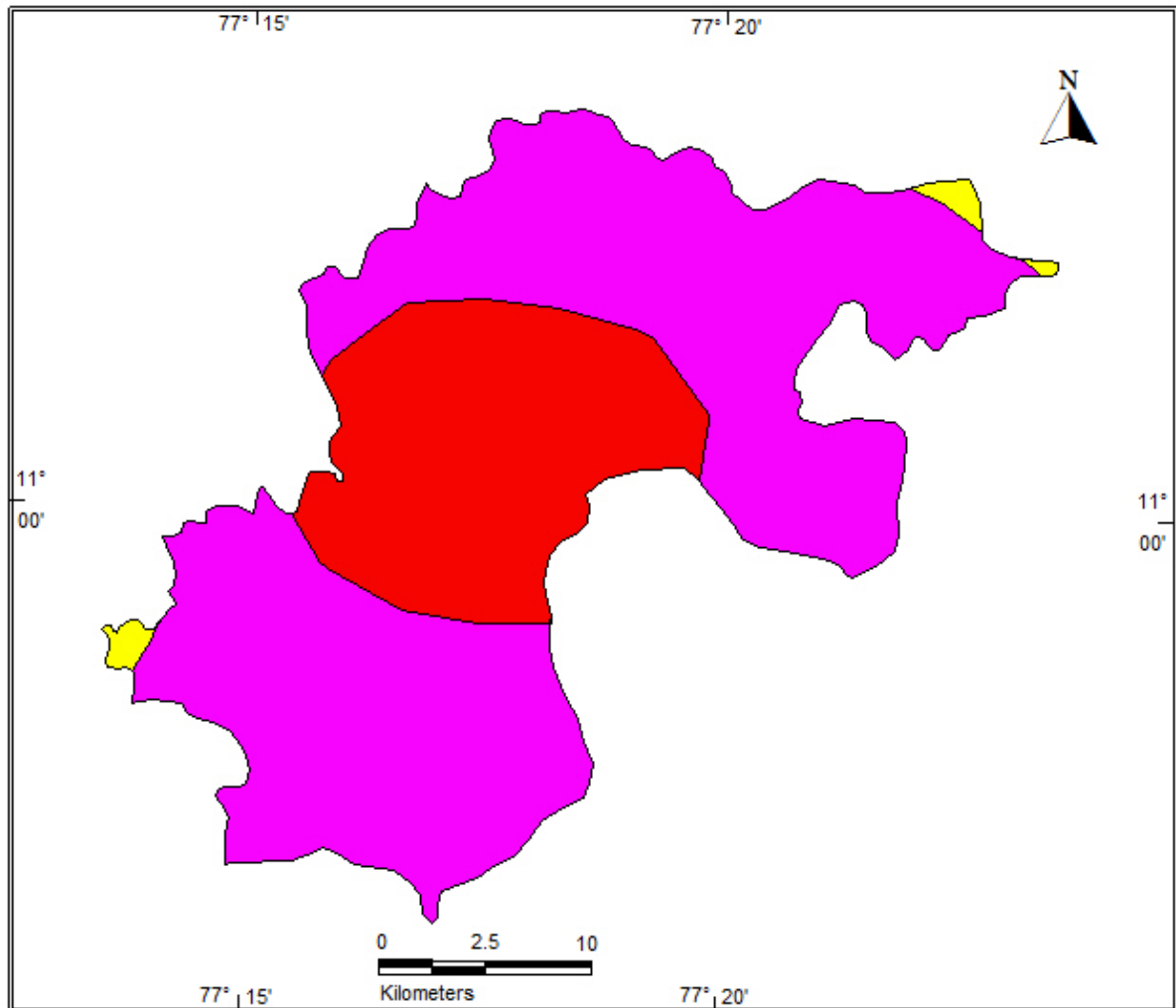


LEGEND

- GNEISS
- 20 WL Contour

Figure 5 showing Hydrogeological Map of Palladam firka

DEPTH TO WATER LEVEL MAP (PRE MONSOON)
PALLADAM FIRKA, PALLADAM TALUK
TIRUPPUR DISTRICT

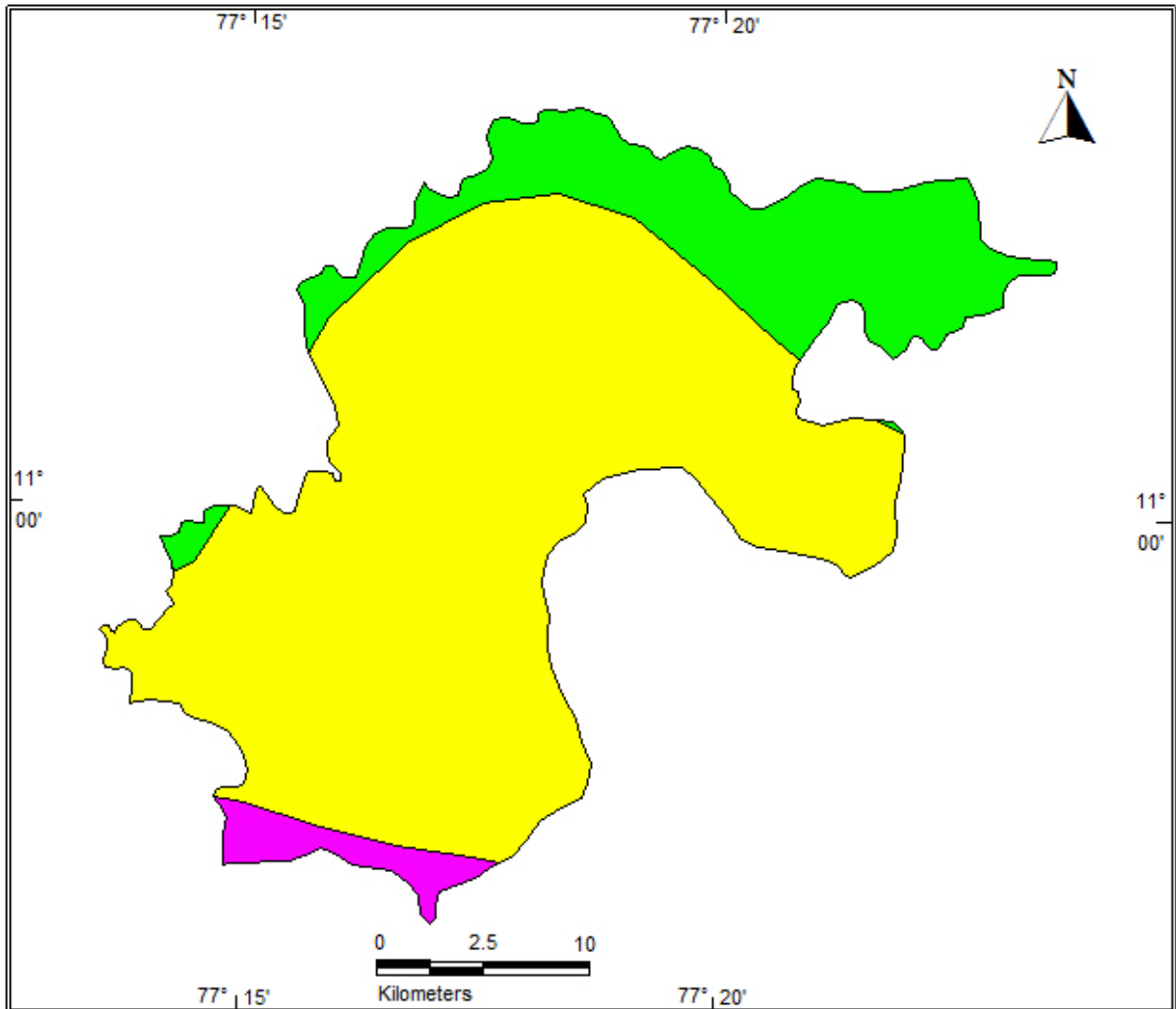


LEGEND

- > 5 m bgl
- 5-10 m bgl
- 10-20 m bgl

Figure 6a Showing Pre -monsoon (Decadal) water level in Palladam firka

DEPTH TO WATER LEVEL MAP (POST MONSOON)
PALLADAM FIRKA, PALLADAM TALUK
TIRUPPUR DISTRICT



LEGEND

- < 2 m bgl
- 2-5 m bgl
- 5-10 m bgl

Figure 6 b Showing Post-monsoon (Decadal) water level in Palladam firka

3.7 Dynamic Ground water Resources

The ground water resources have been computed jointly by Central Ground Water Board and State Ground Water Resources Data Centre (PWD, WRO, Govt. of Tamil Nadu) as on 31st March 2011. The computation has been done using GEC1997 methodology. The salient features of the computations are furnished in table 2.

Table 2. Dynamic Ground water resources estimation of Palladam firka

| Firka | GW WORTHY AREA | REPLENISH ABLE GROUND WATER RESOURCES | NET GROUND WATER AVAILABLE | GROUND WATER DRAFT FOR IRRIGATION | GROUNDWATER DRAFT FOR DOMESTIC & INDUSTRIAL WATER SUPPLY | TOTAL GROUND WATER DRAFT | STAGE OF GROUND WATER DEVELOPMENT (%) | CATEGORY |
|----------|----------------|---------------------------------------|----------------------------|-----------------------------------|--|--------------------------|---------------------------------------|----------------|
| | (Sq.Km) | (In MCM) | | | | | % | |
| Palladam | 120.25 | 9.1366 | 8.223 | 13.7295 | 2.3157 | 16.0452 | 195.127 | OVER EXPLOITED |

4. Spatial Data Integration

The potential area for groundwater recharge is highly influenced by Geology, Geomorphology, Land use /land cover, Drainage, Surface Water Body, Weathered Thickness and first fractured Depth in the area. In order to ascertain the suitable area for groundwater recharge in firka, spatial data integration have been attempted using index overlay model in GIS environ. In this model, above seven layers have been integrated by assigning weightage for the theme having scale of 1-100 and sub-classes of the theme between 1 to 10 scales. The resultant map has been reclassified into four classes (High-low integrated values) indicating the suitable area for artificial recharge and given in fig-7 and described below.

| ZONE | % OF AREA COVERAGE | SIGNIFICANCE* |
|-----------|--------------------|--|
| Very high | 4 | Suitable for all major recharge structures like Percolation pond and stop dam, check dam etc., |
| High | 29 | Suitable for all major recharge structures like stop dam, check dam etc., |
| Moderate | 53 | Suitable for all major recharge structures like earthen check dam, Boulder check dam and Nala bund etc., |
| Poor | 14 | Hilly/Forest /Catchment area |

* However, the field verification is required to confirm above potential area for groundwater recharge.

RECHARGE ZONES
PALLADAM FIRKA, PALLADAM TALUK
TIRUPPUR DISTRICT

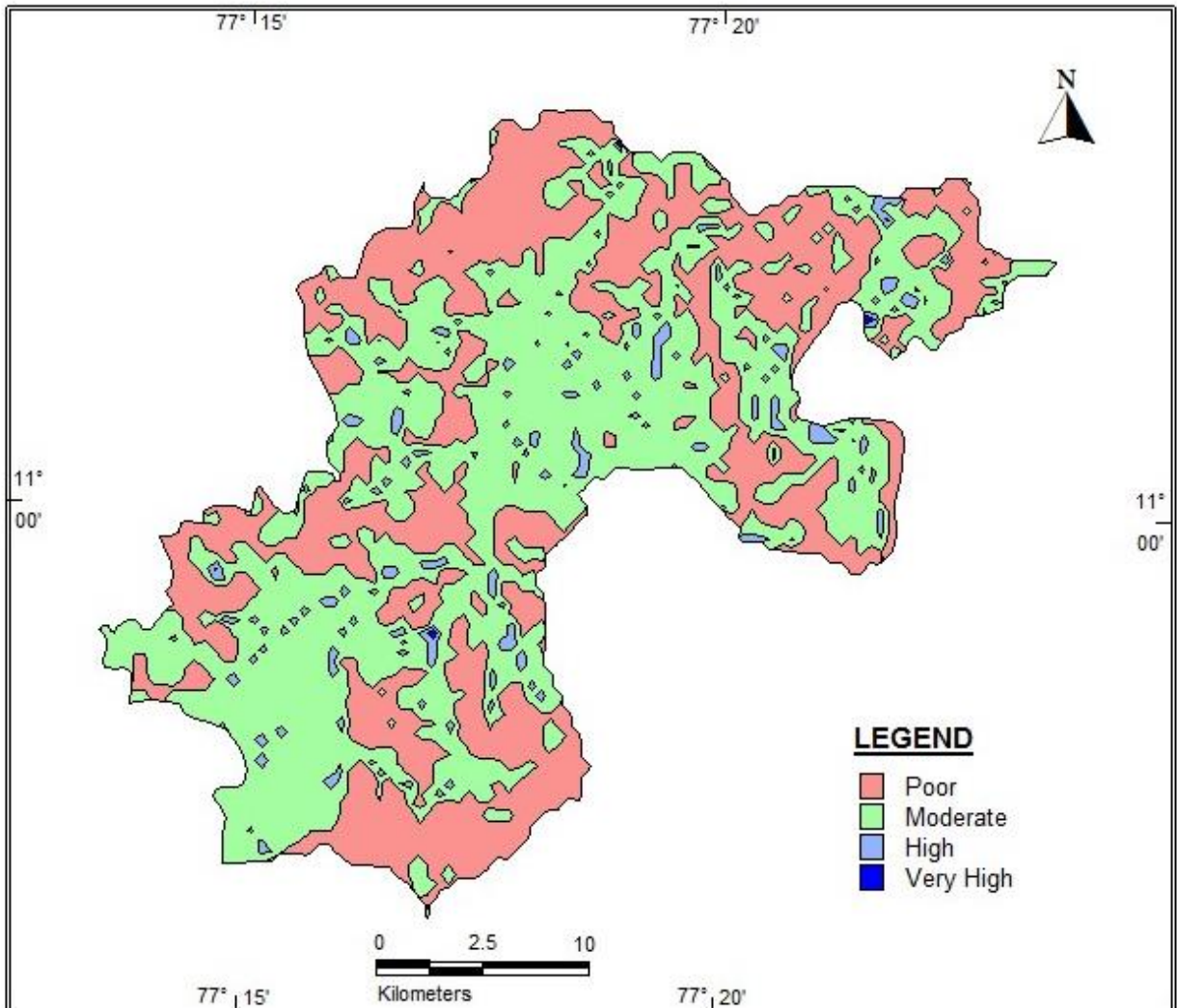


Figure 7 Showing the recharge worthy area Palladam firka

5. Planning for groundwater recharge /conservation

5.1 Justification of the artificial recharge & conservation measures

- ❖ The Palladam firka is with high stage of groundwater development i.e, 195.127 % and with sufficient amount of uncommitted surface runoff/flow of 7.449 MCM.
- ❖ The total weathered zone available beneath the ground in the firka is 14.43 MCM. Out of these total volume available for recharge is 7.405 MCM.

- ❖ The Palladam firka consists of **20 surface water** bodies /lakes which are well connected by the drainage. Revival and Recharge of these ponds will enhance the sustainability of the ground water abstraction structures.
- ❖ However, most of the ground water developments for agricultural purposes are met through dug-cum bore well and bore wells only. Hence, there is sufficient scope of recharge.
- ❖ Model generated in the Palladam areas reveals that more than 80 % of areas are suitable for recharge (includes – moderate, high and very high).
- ❖ In Palladam firka more than 75 % area is characterised by the agricultural activities, there is sufficient scope for the water conservation measures for enhance the crop production and better ground water development.

5.2 Availability of surplus surface water for artificial recharge or conservation

The uncommitted surface flow for Palladam firka is estimated as per the norms followed by State Ground & Surface Water Resources data centre, PWD, Taramani, Chennai (Aug 2015). The available of surplus surface water for Palladam firka is 7.449 MCM.

5.3 Proposed interventions including tentative location of artificial recharge /conservation measures

On basis of above description the following three type of approach have been made to propose artificial recharge or conservation structures.

- a. Artificial recharge
- b. Water conservation measure
- c. Water Efficiency

5.3.1 Artificial recharge

The details of artificial recharge structure proposed along with justification are given below.

5.3.1.1 Check dam/Nala bund

Palladam firka area is covered by the seasonal nallahs/drains which carry heavy discharge during monsoon period. As per the integrated model prediction around 80 % of the firkas areas are suitable for these structures. It is proposed to construct **9** Check dam and **18** Nallah bunds. The tentative location of these **27** ARs are given below and shown in Plate 1. The size and location of these structures are tentative and details field survey is essential to ascertain the exact size and location.

Tentative location of proposed 9 Check dam in Palladam firka

| S. NO. | LONGITUDE | LATITUDE | TYPE OF ARS |
|--------|-----------|----------|-------------|
| 1 | 77.371 | 11.052 | Check Dam |
| 2 | 77.341 | 11.030 | Check Dam |
| 3 | 77.358 | 11.009 | Check Dam |
| 4 | 77.324 | 11.011 | Check Dam |
| 5 | 77.297 | 10.978 | Check Dam |
| 6 | 77.287 | 10.952 | Check Dam |
| 7 | 77.258 | 10.960 | Check Dam |
| 8 | 77.276 | 11.005 | Check Dam |
| 9 | 77.269 | 11.030 | Check Dam |

Tentative location of proposed 18Nalla bund in Palladam firka

| SL.NO | LONGITUDE(D D) | LATITUDE (DD) | TYPE OF ARS |
|-------|----------------|---------------|-------------|
| 1 | 77.268 | 10.954 | Nala Bund |
| 2 | 77.285 | 10.950 | Nala Bund |
| 3 | 77.249 | 10.970 | Nala Bund |
| 4 | 77.254 | 10.958 | Nala Bund |
| 5 | 77.272 | 11.002 | Nala Bund |
| 6 | 77.301 | 10.969 | Nala Bund |
| 7 | 77.294 | 10.972 | Nala Bund |
| 8 | 77.282 | 10.966 | Nala Bund |
| 9 | 77.280 | 10.974 | Nala Bund |
| 10 | 77.265 | 11.028 | Nala Bund |
| 11 | 77.276 | 11.016 | Nala Bund |
| 12 | 77.328 | 11.011 | Nala Bund |
| 13 | 77.308 | 11.013 | Nala Bund |
| 14 | 77.361 | 11.000 | Nala Bund |

| | | | |
|----|--------|--------|-----------|
| 15 | 77.367 | 11.037 | Nala Bund |
| 16 | 77.381 | 11.038 | Nala Bund |
| 17 | 77.344 | 11.029 | Nala Bund |
| 18 | 77.310 | 11.062 | Nala Bund |

5.3.1.2. Revival, repair of water bodies

The existing ponds and tanks in loose their storage capacity as well as the natural ground water recharge through these water bodies has also become negligible due to siltation and encroachment by farmers for agriculture purposes. There are several such villages where ponds/tanks are in dilapidated condition. These existing village tanks which are normally silted and damaged can be modified to serve as recharge structure in case these are suitably located to serve as percolation tanks. Through desilting, coupled with providing proper waste weir, the village tanks can be converted into recharge structure. Several such tanks are available in the area which can be modified for enhancing ground water recharge. Studies, however, are needed to ascertain whether the village tanks are suitably located to serve as recharge structures. The locations of about **20** existing ponds/tanks have been identified with latitude and longitude given below and marked on Plate 1. The above **20** tanks/ponds could be taken up for the renovation with recharge shaft on priority.

Tentative location of proposed de-siltation of pond/tanks with recharge shaft in Palladam firka.

| SI.NO | LONGITUDE | LATITUDE | STRUCTURE | ACTION |
|-------|-----------|----------|------------------|--------------------------------|
| 1 | 77.363 | 11.055 | TANK / RESERVOIR | DESILTATION AND RECHARGE SHAFT |
| 2 | 77.361 | 11.052 | TANK / RESERVOIR | DESILTATION AND RECHARGE SHAFT |
| 3 | 77.373 | 11.045 | TANK / RESERVOIR | DESILTATION AND RECHARGE SHAFT |
| 4 | 77.367 | 11.037 | TANK / RESERVOIR | DESILTATION AND RECHARGE SHAFT |
| 5 | 77.359 | 11.034 | TANK / RESERVOIR | DESILTATION AND RECHARGE SHAFT |
| 6 | 77.296 | 11.025 | TANK / RESERVOIR | DESILTATION AND RECHARGE SHAFT |
| 7 | 77.274 | 11.025 | TANK / RESERVOIR | DESILTATION AND RECHARGE SHAFT |
| 8 | 77.342 | 11.011 | TANK / RESERVOIR | DESILTATION AND RECHARGE SHAFT |
| 9 | 77.246 | 10.989 | TANK / RESERVOIR | DESILTATION AND RECHARGE SHAFT |
| 10 | 77.248 | 10.980 | TANK / RESERVOIR | DESILTATION AND RECHARGE SHAFT |

| | | | | |
|----|--------|--------|------------------|--------------------------------|
| 11 | 77.284 | 10.978 | TANK / RESERVOIR | DESILTATION AND RECHARGE SHAFT |
| 12 | 77.316 | 11.064 | TANK / RESERVOIR | DESILTATION AND RECHARGE SHAFT |
| 13 | 77.361 | 11.052 | TANK / RESERVOIR | DESILTATION AND RECHARGE SHAFT |
| 14 | 77.359 | 11.034 | TANK / RESERVOIR | DESILTATION AND RECHARGE SHAFT |
| 15 | 77.296 | 11.025 | TANK / RESERVOIR | DESILTATION AND RECHARGE SHAFT |
| 16 | 77.343 | 11.011 | TANK / RESERVOIR | DESILTATION AND RECHARGE SHAFT |
| 17 | 77.248 | 10.980 | TANK / RESERVOIR | DESILTATION AND RECHARGE SHAFT |
| 18 | 77.316 | 11.063 | TANK / RESERVOIR | DESILTATION AND RECHARGE SHAFT |
| 19 | 77.284 | 10.978 | TANK / RESERVOIR | DESILTATION AND RECHARGE SHAFT |
| 20 | 77.274 | 11.025 | TANK / RESERVOIR | DESILTATION AND RECHARGE SHAFT |

5.3.2 Water conservation measure

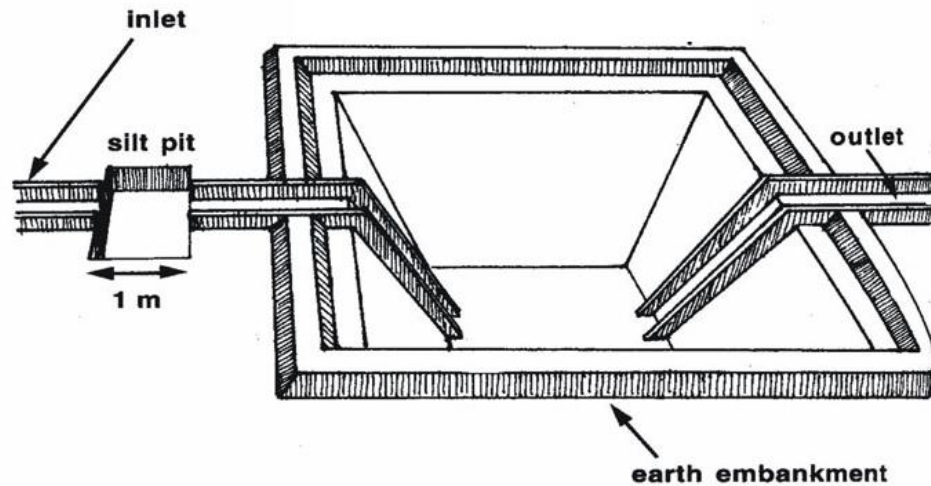
5.3.2.1 Farm Pond

A farm pond is a large dug out in the earth, usually square or rectangular in shape, which harvests rainwater and stores it for future use. It has an inlet to regulate inflow and an outlet to discharge excess water. The pond is surrounded by a small bund, which prevents erosion on the banks of the pond. The size and depth depend on the amount of land available, the type of soil, the farmer's water requirements, the cost of excavation, and the possible uses of the excavated earth. Water from the farm pond is conveyed to the fields manually, by pumping, or by both methods.

Advantages of Farm Ponds

- They provide water to start growing crops, without waiting for rain to fall.
- They provide irrigation water during dry spells between rainfalls. This increases the yield, the number of crops in one year, and the diversity of crops that can be grown.
- Bunds can be used to raise vegetables and fruit trees, thus supplying the farm household with an additional source of income and of nutritious food.
- Farmers are able to apply adequate farm inputs and perform farming operations at the appropriate time, thus increasing their productivity and their confidence in farming.
- They check soil erosion and minimize siltation of waterways and reservoirs.
- They supplies water for domestic purposes and livestock
- They promote fish rearing.
- They recharge the ground water.
- They improve drainage.
- The excavated earth has a very high value and can be used to enrich soil in the fields, levelling land, and constructing farm roads

As per the Landuseclassification of the firka, majority of the area is covered by the agricultural field. Hence it is proposed to construct 100 farm ponds as per the specification of AED, Govt. of Tamil Nadu (30 x 30 x 1.5 m).



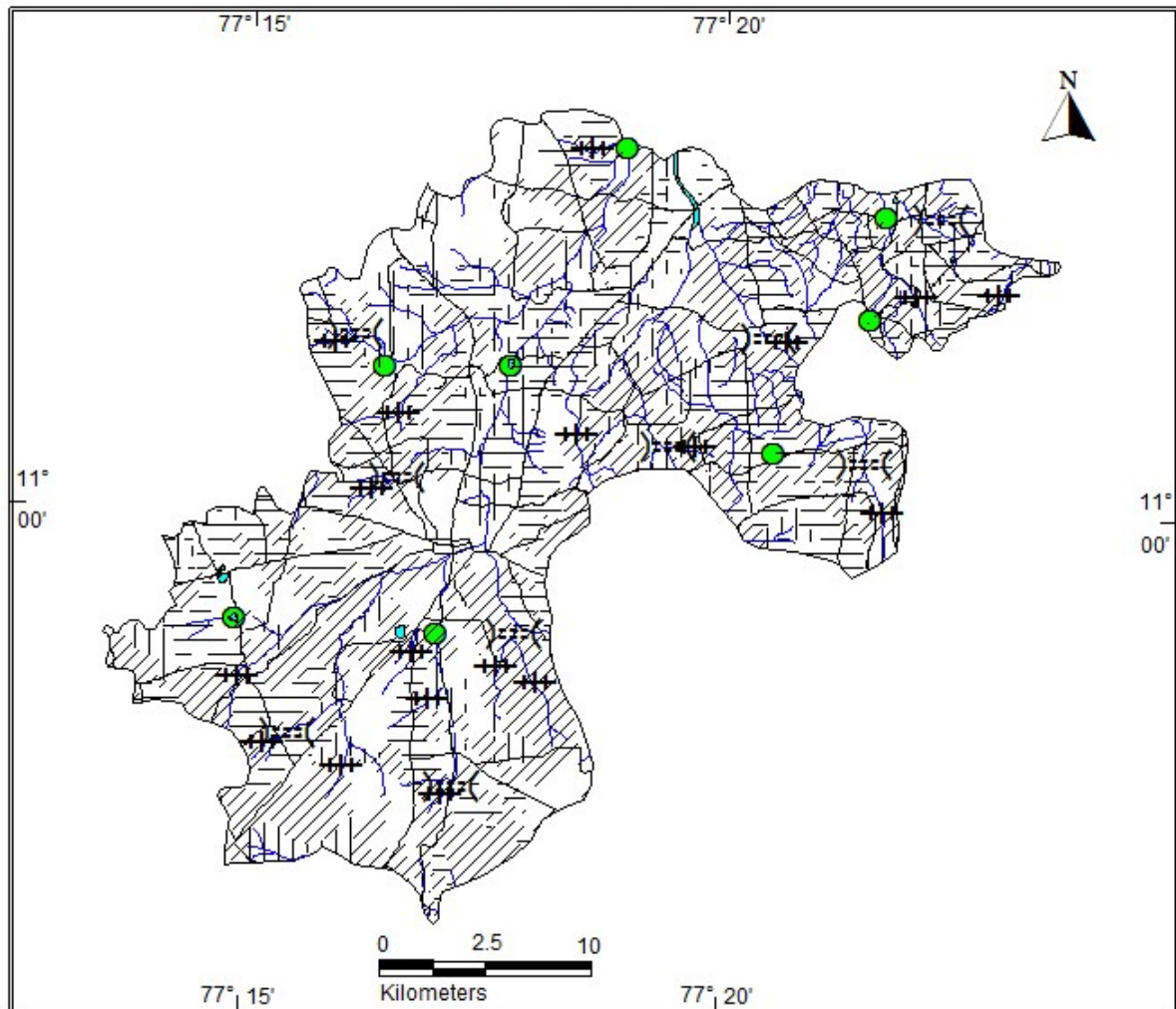
5.3.2.2. Micro Irrigation System (Sprinkler/ drip/ HDPE pipes)

Micro irrigation is defined as the frequent application of small quantities of water directly above and below the soil surface; usually as discrete drops, continuous drops or tiny streams through emitters placed along a water delivery line

In flood/furrow irrigation method more than 50% of applied water is wasted through seepage to deeper level, localized inundation causes loss through evaporation and it leaches out the nutrients from the plant. While through drip & sprinkler irrigation wastage of irrigational water could be minimized. The studies on different crops, has revealed that irrigation water is saved drastically. The conveyance losses (mainly seepage & evaporation) can be saved up to 25 to 40% through utilization of HDPE pipes. Initially the scheme is proposed to be implemented in worst affected areas showing deepest water levels and significant declining trends.

It is proposed to take up micro irrigation system in 100 ha. The cost estimation for this component has been taken from SOR of Agricultural Engineering Department (AED), Govt. of Tamil Nadu. Tentative locations of proposed micro irrigation are shown in Plate 1.

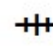


PROPOSED ARTIFICIAL RECHARGE STRUCTURES
PALLADAM FIRKA, PALLADAM TALUK
TIRUPPUR DISTRICT



LEGEND

-  Drainage
-  Tank/Reservoir
-  Road

PROPOSED TYPE OF ARS

-  Nala Bund (18)
-  Check Dams (9)
-  Desilination and Recharge shaft (8)

AREA SUITABLE FOR MICRO IRRIGATION & FARM PONDS

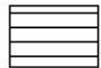
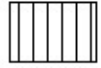

-  Dry crop area
-  Plantation area
-  Wet crop area

Plate 1. Location map showing the proposed AR Structures in Palladam firka

6. Tentative Cost Estimation

The tentative number of feasible structures, its cost and expected annual groundwater recharge/water saving is given in the table 7. The unit rates are as followed by the PWD, Govt. of Tamilnadu (Sources: Scheduled rates, Govt. of Tamilnadu 2015).

Table 7. Showing the Cost Estimation of proposed Artificial Recharge Structures

| Feasible Artificial Recharge & Water Conservation structures/ activities | Tentative Design | quantity (in nos. or area in sq. m) | Total volume (cu.m) | Tentative unit cost (in Rs lakh) | Total tentative cost (in Rs lakh) | Expected Annual GW recharge/ Saving (cu.m) |
|--|---|-------------------------------------|----------------------|----------------------------------|-----------------------------------|--|
| Recharge Structures/ Activities | | | | | | |
| Masonry Check dams (5 Fillings) | Crest- 10 -15 m; Height- 1.0 m to 1.5 m | 9 | 3400 (80%) | 9.0 | 81 | 122400 |
| Nala bund/Gab ion (4 fillings) | Width: 5 to 15 m) | 18 | 3000 | 2.0 | 36 | 43200 |
| Revival, repair of water bodies (3 fillings) | (~150 m x150 m x1.5m) | 20 | 33750 (80%) | 25.0 | 500 | 1620000 |
| Recharge shaft within larger tanks and canals | Shaft = 1.5 m dia x 2m depth with filter media in lower 1 m . Bore dia =10", Casing = 6" Depth = 30 m) | 20 | | 2.0 | 40 | |
| Farm Pond (in ha)(5 filling) | (30 m x 30m x 1.5 m) | 100 unit | 1200(85%) | 1 | 100 | 600000 |
| | | | | Sub total | 757 | 2385600 |
| Water Conservation Measure | | | | | | |
| Sprinkler/ drip/ HDPE pipes | For 1 ha with 5 m interval HDPE pipe | 100 ha | | 0.6 /ha | 60 | 700000 |
| | | | | Total | 817 | 3085600 |
| Impact assessment and O & M | | | | | | |
| Piezometers Up to 50 m bgl – 5 nos. @ 0.6 lakh (Impact assessment to be carried out by the implementing agencies) | | | | | 3 | |
| Total cost of the Project | | | | | 820 | |
| O & M - 5 % of total cost of the scheme | | | | | 41 | |
| Impact assessment to be carried out by the implementing agencies @ 5% of Total cost | | | | | 41 | |
| TOTAL | | | | | 902 | |

Note:

- The type, number and cost of structure may vary according to site, after the ground truth verification.
- CD, PC- the storage of Check-dams and percolation ponds is also proposed for irrigating the surrounding areas for enhancing the groundwater recharge as well as effective utilization of the artificial recharge structures.

7. Implication modalities

The implementation of the scheme will be done by the line department of the state selected by the respective State authority. Further, it is to add that more than 50 % MGNREGA works related to water conservation/sustainable management, accordingly a convergence guideline has been made between National Rural Employment Guarantee Act (NREGA) (Ministry of Rural Development) & Programmes of Water Resources (MoWR , RD & GR).

a.) Time schedule

| Steps | 1 st Quarter | 2 th Quarter | 3 rd Quarter | 4 th Quarter | 5 th Quarter | 6 th Quarter | 7 th Quarter | 8 th Quarter |
|---|-------------------------|-------------------------|-------------------------|-------------------------|-------------------------|-------------------------|-------------------------|-------------------------|
| ❖ Identification of line department /implementing agency and preparation of DPR | | | | | | | | |
| ❖ Approval of scheme and release of sanction of funds | | | | | | | | |
| ❖ Implementation of ARS | | | | | | | | |

Phase = one quarter or 3 months or equivalent to financial quarter

b.) Operation and maintenance

In all projects Impact assessment has to be carried out to ensure that projects is economically viable, socially equitable and environmentally sustainable by inter-related socio-economic, cultural and human-health impacts, both beneficial and adverse. Accordingly it is proposed a have impact assessment at rate of 5 % of the total cost of the project for 5 years from the completion of artificial recharge structures.